

DLG3 polyclonal antibody

Catalog # PAB28478

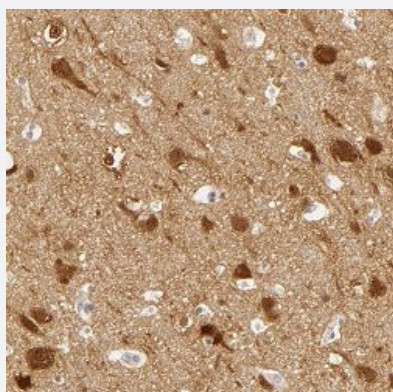
Size 100 uL

Applications



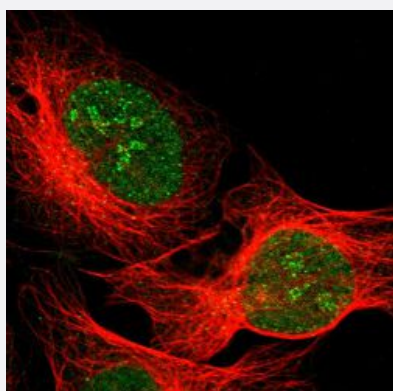
Western Blot (Transfected lysate)

Western blot analysis of Lane 1: Negative control (vector only transfected HEK293T lysate), Lane 2: Over-expression Lysate (Co-expressed with a C-terminal myc-DDK tag (~3.1 kDa) in mammalian HEK293T cells) with DLG3 polyclonal antibody at 1:100-1:250 dilution.



Immunohistochemistry (Formalin/PFA-fixed paraffin-embedded sections)

Immunohistochemical staining of human cerebral cortex with DLG3 polyclonal antibody (Cat # PAB28478) shows distinct nuclear and cytoplasmic positivity in neuronal cells at 1:50-1:200 dilution.



Immunofluorescence

Immunofluorescent staining of human cell line U-2 OS with DLG3 polyclonal antibody (Cat # PAB28478) at 1-4 ug/ml shows positivity in nucleus & nucleoli.

Specification

Product Description	Rabbit polyclonal antibody raised against recombinant DLG3.
Immunogen	Recombinant protein corresponding to amino acids of human DLG3
Sequence	HKHQHCCKCPECYEVTRLAALRRLEPPGYGDWQVPDPYGPGGGNGASAGYGGYSSQTLPSQA GATPTPRTKAKLIPTGRDVGVPVPPKVPVGKSTPKLNGSGPSWWPECTCTNRDWYEQVNGSD
Host	Rabbit
Reactivity	Human
Form	Liquid
Purification	Antigen affinity purification
Isotype	IgG
Recommend Usage	Immunohistochemistry(1:50-1:200) Western Blot(1:100-1:250) Immunofluorescence(1-4 ug/ml) The optimal working dilution should be determined by the end user.
Storage Buffer	In PBS, pH 7.2 (40% glycerol, 0.02% sodium azide)
Storage Instruction	Store at 4°C. For long term storage store at -20°C. Aliquot to avoid repeated freezing and thawing.
Note	This product contains sodium azide: a POISONOUS AND HAZARDOUS SUBSTANCE which should be handled by trained staff only.

Applications

- Western Blot (Transfected lysate)

Western blot analysis of Lane 1: Negative control (vector only transfected HEK293T lysate), Lane 2: Over-expression Lysate (Co-expressed with a C-terminal myc-DDK tag (~3.1 kDa) in mammalian HEK293T cells) with DLG3 polyclonal antibody at 1:100-1:250 dilution.

- Immunohistochemistry (Formalin/PFA-fixed paraffin-embedded sections)

Immunohistochemical staining of human cerebral cortex with DLG3 polyclonal antibody (Cat # PAB28478) shows distinct nuclear and cytoplasmic positivity in neuronal cells at 1:50-1:200 dilution.

- Immunofluorescence

Immunofluorescent staining of human cell line U-2 OS with DLG3 polyclonal antibody (Cat # PAB28478) at 1-4 ug/ml shows positivity in nucleus & nucleoli.

Gene Info — DLG3

Entrez GeneID	1741
Protein Accession#	Q92796
Gene Name	DLG3
Gene Alias	KIAA1232, MRX, MRX90, NE-Dlg, NEDLG, SAP-102, SAP102
Gene Description	discs, large homolog 3 (Drosophila)
Omim ID	300189
Gene Ontology	Hyperlink
Gene Summary	O
Other Designations	OTTHUMP00000023475 OTTHUMP00000023476 bA291O7.3 (discs, large Drosophila homolog 3 (neuroendocrine-dlg)) discs large homolog 3 discs, large homolog 3 (neuroendocrine-dlg, Drosophila) neuroendocrine-dlg synapse-associated protein 102

Disease

- [Cardiovascular Diseases](#)
- [Diabetes Mellitus](#)
- [Edema](#)
- [Genetic Predisposition to Disease](#)
- [Mental Disorders](#)