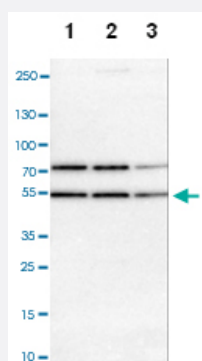


RBM22 polyclonal antibody

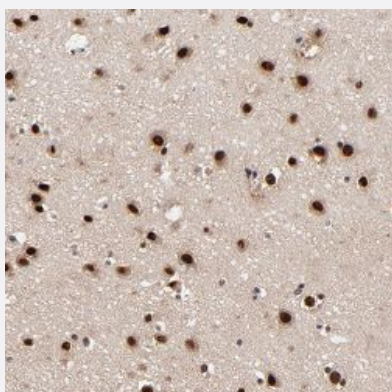
Catalog # PAB28467 Size 100 uL

Applications



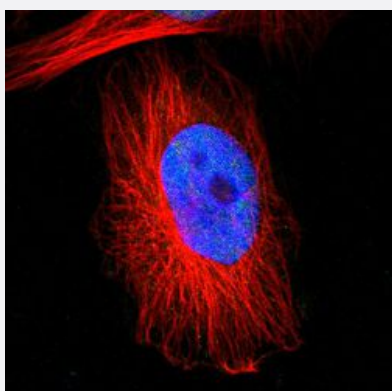
Western Blot (Cell lysate)

Western blot analysis of Lane 1: NIH-3T3 cell lysate (Mouse embryonic fibroblast cells), Lane 2: NBT-II cell lysate (Rat Wistar bladder tumour cells), Lane 3: PC12 cell lysate (Pheochromocytoma of rat adrenal medulla) with RBM22 polyclonal antibody at 1:100-1:500 dilution.



Immunohistochemistry (Formalin/PFA-fixed paraffin-embedded sections)

Immunohistochemical staining of human cerebral cortex with RBM22 polyclonal antibody (Cat # PAB28467) shows strong nuclear positivity in neuronal cells at 1:20-1:50 dilution.



Immunofluorescence

Immunofluorescent staining of human cell line U-251MG with RBM22 polyclonal antibody (Cat # PAB28467) at 1-4 ug/ml shows positivity in nuclei but not nucleoli.

Specification

Product Description	Rabbit polyclonal antibody raised against recombinant RBM22.
Immunogen	Recombinant protein corresponding to amino acids of human RBM22
Sequence	NTYNRQNWEDADFPILCQTCLGENPYIRMTKEKYGKECKICARPFTVFRWCPGVRMRFFKKTEVC QTCSKLNVCQTCLLDLEYGLPIQVRDAGLSFKDDMPKSDVNKEYYTQNMEREISNSDGTRPVG MLGKATSTSDMLLKL
Host	Rabbit
Reactivity	Human, Mouse, Rat
Form	Liquid
Purification	Antigen affinity purification
Isotype	IgG
Recommend Usage	Immunohistochemistry(1:20-1:50) Western Blot(1:100-1:250) Immunofluorescence(1-4 ug/ml) The optimal working dilution should be determined by the end user.
Storage Buffer	In PBS, pH 7.2 (40% glycerol, 0.02% sodium azide)
Storage Instruction	Store at 4°C. For long term storage store at -20°C. Aliquot to avoid repeated freezing and thawing.
Note	This product contains sodium azide: a POISONOUS AND HAZARDOUS SUBSTANCE which should be handled by trained staff only.

Applications

- Western Blot (Cell lysate)

Western blot analysis of Lane 1: NIH-3T3 cell lysate (Mouse embryonic fibroblast cells), Lane 2: NBT-II cell lysate (Rat Wistar bladder tumour cells), Lane 3: PC12 cell lysate (Pheochromocytoma of rat adrenal medulla) with RBM22 polyclonal antibody at 1:100-1:500 dilution.

- Immunohistochemistry (Formalin/PFA-fixed paraffin-embedded sections)

Immunohistochemical staining of human cerebral cortex with RBM22 polyclonal antibody (Cat # PAB28467) shows strong nuclear positivity in neuronal cells at 1:20-1:50 dilution.

- Immunofluorescence

Immunofluorescent staining of human cell line U-251MG with RBM22 polyclonal antibody (Cat # PAB28467) at 1-4 ug/ml shows positivity in nuclei but not nucleoli.

Gene Info — RBM22

Entrez GeneID [55696](#)**Protein Accession#** [Q9NW64](#)**Gene Name** RBM22**Gene Alias** FLJ10290, ZC3H16, fSAP47**Gene Description** RNA binding motif protein 22**Gene Ontology** [Hyperlink](#)

Gene Summary This gene encodes an RNA binding protein. The encoded protein may play a role in cell division and may be involved in pre-mRNA splicing. Related pseudogenes exist on chromosomes 6, 7, 9, 13, 16, 18, and X. [provided by RefSeq]

Other Designations functional spliceosome-associated protein 47