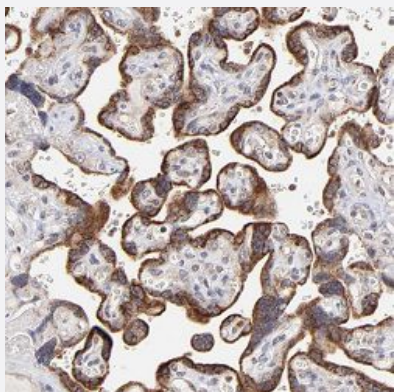


# MAP2K7 polyclonal antibody

Catalog # PAB28466      Size 100 uL

## Applications



### Immunohistochemistry (Formalin/PFA-fixed paraffin-embedded sections)

Immunohistochemical staining of human placenta with MAP2K7 polyclonal antibody (Cat # PAB28466) shows strong cytoplasmic positivity in trophoblastic cells at 1:10-1:20 dilution.

## Specification

Product Description	Rabbit polyclonal antibody raised against recombinant MAP2K7.
Immunogen	Recombinant protein corresponding to amino acids of human MAP2K7
Sequence	LVDSKAKTRSAGCAAYMAPERIDPPDPTKPDYDIRADVWSLGISLVELATGQFPYKNCKTDFEVL TKVLQEEPLLPGHMGFSGDFQSFVKDCLTKDHRKRPKYNKLEHSFIKRYETMEV
Host	Rabbit
Form	Liquid
Purification	Antigen affinity purification
Isotype	IgG
Recommend Usage	Immunohistochemistry(1:10-1:20) The optimal working dilution should be determined by the end user.
Storage Buffer	In PBS, pH 7.2 (40% glycerol, 0.02% sodium azide)

**Storage Instruction**

Store at 4°C. For long term storage store at -20°C.  
Aliquot to avoid repeated freezing and thawing.

**Note**

This product contains sodium azide: a POISONOUS AND HAZARDOUS SUBSTANCE which should be handled by trained staff only.

## Applications

- Immunohistochemistry (Formalin/PFA-fixed paraffin-embedded sections)

Immunohistochemical staining of human placenta with MAP2K7 polyclonal antibody (Cat # PAB28466) shows strong cytoplasmic positivity in trophoblastic cells at 1:10-1:20 dilution.

## Gene Info — MAP2K7

**Entrez GeneID** [5609](#)

**Protein Accession#** [F6WCX7](#)

**Gene Name** MAP2K7

**Gene Alias** Jnk2, MAPKK7, MKK7, PRKMK7

**Gene Description** mitogen-activated protein kinase kinase 7

**Omim ID** [603014](#)

**Gene Ontology** [Hyperlink](#)

**Gene Summary**

The protein encoded by this gene is a dual specificity protein kinase that belongs to the MAP kinase family. This kinase specifically activates MAPK8/JNK1 and MAPK9/JNK2, and this kinase itself is phosphorylated and activated by MAP kinase kinase kinases including MAP3K1/MEKK1, MAP3K2/MEKK2, MAP3K3/MEKK5, and MAP4K2/GCK. This kinase is involved in the signal transduction mediating the cell responses to proinflammatory cytokines, and environmental stresses. Multiple alternatively spliced transcript variants encoding distinct isoforms have been found, but only one transcript variant has been supported and defined. [provided by RefSeq]

**Other Designations**

JNK kinase 2|JNK-activating kinase 2|MAP kinase kinase 7|OTTHUMP00000174397|c-Jun N-terminal kinase kinase 2|dual specificity mitogen-activated protein kinase kinase 7

## Pathway

- [ErbB signaling pathway](#)

- [Fc epsilon RI signaling pathway](#)
- [GnRH signaling pathway](#)
- [MAPK signaling pathway](#)
- [Neurotrophin signaling pathway](#)
- [T cell receptor signaling pathway](#)
- [Toll-like receptor signaling pathway](#)