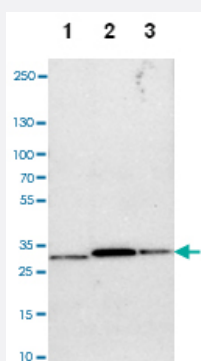


NP polyclonal antibody

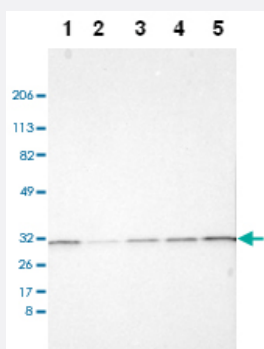
Catalog # PAB28465 Size 100 uL

Applications



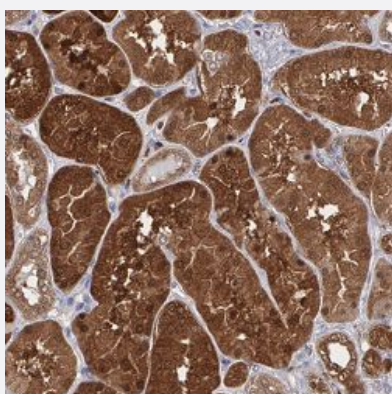
Western Blot (Cell lysate)

Western blot analysis of Lane 1: NIH-3T3 cell lysate (Mouse embryonic fibroblast cells), Lane 2: NBT-II cell lysate (Rat Wistar bladder tumour cells), Lane 3: PC12 cell lysate (Pheochromocytoma of rat adrenal medulla) with NP polyclonal antibody.



Western Blot

Western blot analysis of Lane 1: RT-4, Lane 2: U-251 MG, Lane 3: A-431, Lane 4: Liver, Lane 5: Tonsil with NP polyclonal antibody.



Immunohistochemistry (Formalin/PFA-fixed paraffin-embedded sections)

Immunohistochemical staining of human kidney with NP polyclonal antibody (Cat # PAB28465) shows strong cytoplasmic and nuclear positivity in cells of tubules.

Specification

Product Description	Rabbit polyclonal antibody raised against recombinant NP.
Immunogen	Recombinant protein corresponding to amino acids of human NP
Sequence	YTYEDYKNTAEWLLSHTKHRPQVAIICGSGLGGLTDKLTQAQIFDYGEIPNFPRSTVPGHAGRLVFG FLNGRACVMMQGRFHMYESGYPLWKVTFPVRVFHLLGVDTLVVTNAAGGLNPKFEVGDIMLIRDHI NLPGFSGQNPLRGPNDERGAPHR
Host	Rabbit
Reactivity	Human, Mouse, Rat
Form	Liquid
Purification	Antigen affinity purification
Isotype	IgG
Recommend Usage	Immunohistochemistry(1:200-1:500) Western Blot(1:100-1:250) The optimal working dilution should be determined by the end user.
Storage Buffer	In PBS, pH 7.2 (40% glycerol, 0.02% sodium azide)
Storage Instruction	Store at 4°C. For long term storage store at -20°C. Aliquot to avoid repeated freezing and thawing.
Note	This product contains sodium azide: a POISONOUS AND HAZARDOUS SUBSTANCE which should be handled by trained staff only.

Applications

- Western Blot (Cell lysate)

Western blot analysis of Lane 1: NIH-3T3 cell lysate (Mouse embryonic fibroblast cells), Lane 2: NBT-II cell lysate (Rat Wistar bladder tumour cells), Lane 3: PC12 cell lysate (Pheochromocytoma of rat adrenal medulla) with NP polyclonal antibody.

- Western Blot

Western blot analysis of Lane 1: RT-4, Lane 2: U-251 MG, Lane 3: A-431, Lane 4: Liver, Lane 5: Tonsil with NP polyclonal antibody.

- Immunohistochemistry (Formalin/PFA-fixed paraffin-embedded sections)

Immunohistochemical staining of human kidney with NP polyclonal antibody (Cat # PAB28465) shows strong cytoplasmic and nuclear positivity in cells of tubules.

Gene Info — NP

Entrez GeneID	4860
Protein Accession#	G3V5M2
Gene Name	NP
Gene Alias	FLJ94043, FLJ97288, FLJ97312, MGC117396, MGC125915, MGC125916, PNP, PRO1837, P UNP
Gene Description	nucleoside phosphorylase
Omim ID	164050
Gene Ontology	Hyperlink
Gene Summary	This gene encodes an enzyme which reversibly catalyzes the phosphorolysis of purine nucleoside s. The enzyme is trimeric, containing three identical subunits. Mutations which result in nucleoside phosphorylase deficiency result in defective T-cell (cell-mediated) immunity but can also affect B-cell immunity and antibody responses. Neurologic disorders may also be apparent in patients with immune defects. A known polymorphism at aa position 51 that does not affect enzyme activity has been described. A pseudogene has been identified on chromosome 2. [provided by RefSeq
Other Designations	inosine phosphorylase purine nucleoside phosphorylase

Pathway

- [Biosynthesis of alkaloids derived from histidine and purine](#)
- [Metabolic pathways](#)
- [Nicotinate and nicotinamide metabolism](#)
- [Purine metabolism](#)
- [Pyrimidine metabolism](#)

Disease

- [Alzheimer disease](#)
- [Cognition Disorders](#)
- [Disease Progression](#)
- [Genetic Predisposition to Disease](#)