

# FBLN1 polyclonal antibody

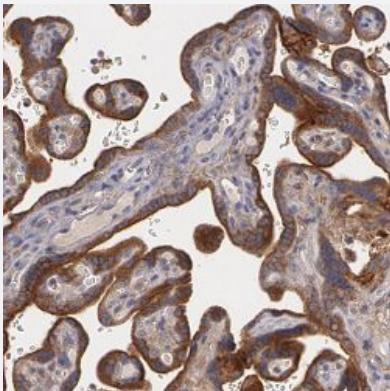
Catalog # PAB28461      Size 100 uL

## Applications



### Western Blot (Transfected lysate)

Western blot analysis of Lane 1: Negative control (vector only transfected HEK293T lysate), Lane 2: Over-expression Lysate (Co-expressed with a C-terminal myc-DDK tag (~3.1 kDa) in mammalian HEK293T cells) with FBLN1 polyclonal antibody.



### Immunohistochemistry (Formalin/PFA-fixed paraffin-embedded sections)

Immunohistochemical staining of human placenta with FBLN1 polyclonal antibody (Cat # PAB28461) shows cytoplasmic and membranous positivity in trophoblastic cells.

## Specification

Product Description	Rabbit polyclonal antibody raised against recombinant FBLN1.
Immunogen	Recombinant protein corresponding to amino acids of human FBLN1
Sequence	NTLGSYLCSCSVGFRLSVDGRSCEDINECSSSPCSQECANVYGSYQCYCRRGYQLSDVDGVTC EDIDECALPTGGHICSYRCINIPGSFQCSCPSSGYRLAPNGRNCQDIDECVTGIHNCSINETCFNIQG GFRCLAFECPEN
Host	Rabbit
Reactivity	Human

Form	Liquid
Purification	Antigen affinity purification
Isotype	IgG
Recommend Usage	Immunohistochemistry(1:50-1:200) Western Blot(1:250-1:500) The optimal working dilution should be determined by the end user.
Storage Buffer	In PBS, pH 7.2 (40% glycerol, 0.02% sodium azide)
Storage Instruction	Store at 4°C. For long term storage store at -20°C. Aliquot to avoid repeated freezing and thawing.
Note	This product contains sodium azide: a POISONOUS AND HAZARDOUS SUBSTANCE which should be handled by trained staff only.

## Applications

- Western Blot (Transfected lysate)

Western blot analysis of Lane 1: Negative control (vector only transfected HEK293T lysate), Lane 2: Over-expression Lysate (Co-expressed with a C-terminal myc-DDK tag (~3.1 kDa) in mammalian HEK293T cells) with FBLN1 polyclonal antibody.

- Immunohistochemistry (Formalin/PFA-fixed paraffin-embedded sections)

Immunohistochemical staining of human placenta with FBLN1 polyclonal antibody (Cat # PAB28461) shows cytoplasmic and membranous positivity in trophoblastic cells.

## Gene Info — FBLN1

Entrez GeneID	<a href="#">2192</a>
Protein Accession#	<a href="#">B1AHL2</a>
Gene Name	FBLN1
Gene Alias	FBLN
Gene Description	fibulin 1
Omim ID	<a href="#">135820 608180</a>
Gene Ontology	<a href="#">Hyperlink</a>

**Gene Summary**

Fibulin 1 is a secreted glycoprotein that becomes incorporated into a fibrillar extracellular matrix. Calcium-binding is apparently required to mediate its binding to laminin and nidogen. It mediates platelet adhesion via binding fibrinogen. Four splice variants which differ in the 3' end have been identified. Each variant encodes a different isoform, but no functional distinctions have been identified among the four variants. [provided by RefSeq]

**Other Designations**

OTTHUMP00000028589

**Disease**

- [Abortion](#)
- [Heart Defects](#)
- [Infertility](#)
- [Tobacco Use Disorder](#)