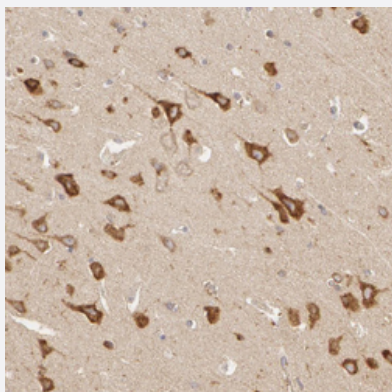


SERPINI1 polyclonal antibody

Catalog # PAB28451 Size 100 uL

Applications



Immunohistochemistry (Formalin/PFA-fixed paraffin-embedded sections)

Immunohistochemical staining of human lateral ventricle wall with sERPINI1 polyclonal antibody (Cat # PAB28451) shows strong cytoplasmic positivity in neuronal cells.

Specification

Product Description	Rabbit polyclonal antibody raised against recombinant SERPINI1.
Immunogen	Recombinant protein corresponding to amino acids of recombinant SERPINI1.
Sequence	DESEVQIPMMYQQGEFYGEFSDGSNEAGGIQVLEIPYEGDEISMMLVLSRQEVPLATLEPLVKAQLVEEWANSVKKQKVEVYLPRFTVEQEIDLKDVLKALGI
Host	Rabbit
Reactivity	Human
Form	Liquid
Purification	Antigen affinity purification
Isotype	IgG
Recommend Usage	Immunohistochemistry(1:50-1:200) The optimal working dilution should be determined by the end user.
Storage Buffer	In PBS, pH 7.2 (40% glycerol, 0.02% sodium azide)

Storage Instruction

Store at 4°C. For long term storage store at -20°C.
Aliquot to avoid repeated freezing and thawing.

Note

This product contains sodium azide: a POISONOUS AND HAZARDOUS SUBSTANCE which should be handled by trained staff only.

Applications

- Immunohistochemistry (Formalin/PFA-fixed paraffin-embedded sections)

Immunohistochemical staining of human lateral ventricle wall with SERPINI1 polyclonal antibody (Cat # PAB28451) shows strong cytoplasmic positivity in neuronal cells.

Gene Info — SERPINI1

Entrez GeneID[5274](#)**Protein Accession#**[Q99574](#)**Gene Name**

SERPINI1

Gene Alias

DKFZp781N13156, PI12, neuroserpin

Gene Description

serpin peptidase inhibitor, clade I (neuroserpin), member 1

Omim ID[602445 604218](#)**Gene Ontology**[Hyperlink](#)**Gene Summary**

This gene encodes a member of the serpin superfamily of serine proteinase inhibitors. The protein is primarily secreted by axons in the brain, and preferentially reacts with and inhibits tissue-type plasminogen activator. It is thought to play a role in the regulation of axonal growth and the development of synaptic plasticity. Mutations in this gene result in familial encephalopathy with neuroserpin inclusion bodies (FENIB), which is a dominantly inherited form of familial encephalopathy and epilepsy characterized by the accumulation of mutant neuroserpin polymers. Multiple alternatively spliced variants, encoding the same protein, have been identified. [provided by RefSeq]

Other Designations

neuroserpin|serine (or cysteine) proteinase inhibitor, clade I (neuroserpin), member 1

Disease

- [Birth Weight](#)
- [Genetic Predisposition to Disease](#)

- [Glioblastoma](#)
- [Glioma](#)
- [Leukemia](#)
- [Meningeal Neoplasms](#)
- [Meningioma](#)
- [Stroke](#)