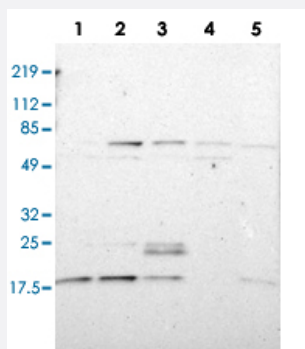


ATF3 polyclonal antibody

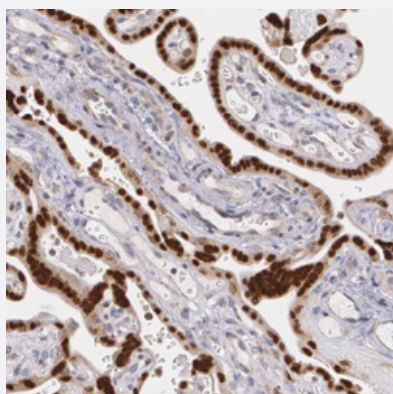
Catalog # PAB28450 Size 100 uL

Applications



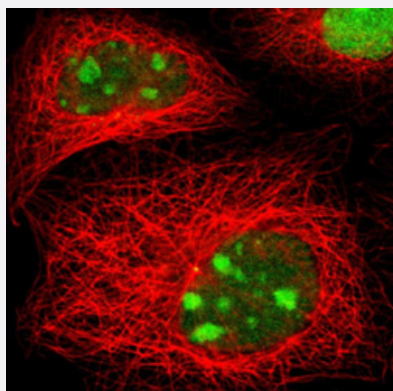
Western Blot

Western blot analysis of Lane 1: RT-4, Lane 2: U-251 MG, Lane 3: A-431, Lane 4: Liver, Lane 5: Tonsil with ATF3 polyclonal antibody (Cat # PAB28450) at 1:100-1:250 dilution.



Immunohistochemistry (Formalin/PFA-fixed paraffin-embedded sections)

Immunohistochemical staining of human placenta with ATF3 polyclonal antibody (Cat # PAB28450) shows strong nuclear positivity in trophoblastic cells at 1:200-1:500 dilution.



Immunofluorescence

Immunofluorescent staining of A-431 with ATF3 polyclonal antibody (Cat # PAB28450) at 1-4 ug/mL dilution shows positivity in nucleus & nucleoli.

Specification

Product Description	Rabbit polyclonal antibody raised against recombinant ATF3.
Immunogen	Recombinant protein corresponding to amino acids of recombinant ATF3.
Sequence	MMLQHPGQVSASEVSASAINPCLSPPGSLVFEDFANLTPFVKEELRFAIQNKHLCHRMSSALES VTVSDRPLGVSITKA EVAPEEDERKKRRRRERNKIAAAKCRNKKKEKTEC
Host	Rabbit
Reactivity	Human, Mouse, Rat
Form	Liquid
Purification	Antigen affinity purification
Isotype	IgG
Recommend Usage	Immunohistochemistry(1:200-1:500) Western Blot(1:100-1:250) Immunofluorescence (1-4 ug/ml) The optimal working dilution should be determined by the end user.
Storage Buffer	In PBS, pH 7.2 (40% glycerol, 0.02% sodium azide)
Storage Instruction	Store at 4°C. For long term storage store at -20°C. Aliquot to avoid repeated freezing and thawing.
Note	This product contains sodium azide: a POISONOUS AND HAZARDOUS SUBSTANCE which should be handled by trained staff only.

Applications

- Western Blot

Western blot analysis of Lane 1: RT-4, Lane 2: U-251 MG, Lane 3: A-431, Lane 4: Liver, Lane 5: Tonsil with ATF3 polyclonal antibody (Cat # PAB28450) at 1:100-1:250 dilution.

- Immunohistochemistry (Formalin/PFA-fixed paraffin-embedded sections)

Immunohistochemical staining of human placenta with ATF3 polyclonal antibody (Cat # PAB28450) shows strong nuclear positivity in trophoblastic cells at 1:200-1:500 dilution.

- Immunofluorescence

Immunofluorescent staining of A-431 with ATF3 polyclonal antibody (Cat # PAB28450) at 1-4 ug/mL dilution shows positivity in nucleus & nucleoli.

Gene Info — ATF3

Entrez GeneID	467
Protein Accession#	P18847
Gene Name	ATF3
Gene Alias	-
Gene Description	activating transcription factor 3
Omim ID	603148
Gene Ontology	Hyperlink
Gene Summary	<p>Activating transcription factor 3 is a member of the mammalian activation transcription factor/cAMP responsive element-binding (CREB) protein family of transcription factors. Multiple transcript variants encoding two different isoforms have been found for this gene. The longer isoform represses rather than activates transcription from promoters with ATF binding elements. The shorter isoform (deltaZip2) lacks the leucine zipper protein-dimerization motif and does not bind to DNA, and it stimulates transcription presumably by sequestering inhibitory co-factors away from the promoter. It is possible that alternative splicing of the ATF3 gene may be physiologically important in the regulation of target genes. [provided by RefSeq]</p>
Other Designations	ATF3deltaZip2 ATF3deltaZip2c ATF3deltaZip3 OTTHUMP00000034887 OTTHUMP00000034890

Publication Reference

- [The antioxidant transcription factor Nrf2 modulates the stress response and phenotype of malignant as well as premalignant pancreatic ductal epithelial cells by inducing expression of the ATF3 splicing variant ΔZip2.](#)

Kha ML, Hesse L, Deisinger F, Sipos B, Röcken C, Arlt A, Sebens S, Helm O, Schäfer H.

Oncogene 2019 Feb; 38(9):1461.

Application: IHC-P, Human, Human pancreatic ductal adenocarcinoma

Disease

- [Cardiovascular Diseases](#)
- [Cryptorchidism](#)
- [Diabetes Mellitus](#)
- [Edema](#)

- [Genetic Predisposition to Disease](#)
- [Hypospadias](#)
- [Kidney Failure](#)