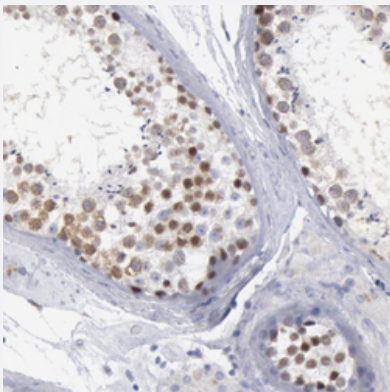


SMC1B polyclonal antibody

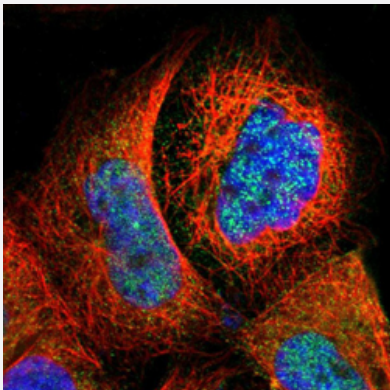
Catalog # PAB28446 Size 100 uL

Applications



Immunohistochemistry (Formalin/PFA-fixed paraffin-embedded sections)

Immunohistochemical staining of human testis with SMC1B polyclonal antibody (Cat # PAB28446) shows nuclear positivity in cells of seminiferous ducts.



Immunofluorescence

Immunofluorescent staining of A-431 with sMC1B polyclonal antibody (Cat # PAB28446) at 1-4 ug/mL dilution shows positivity in nucleus but not nucleoli & cytoplasm.

Specification

Product Description	Rabbit polyclonal antibody raised against recombinant SMC1B.
Immunogen	Recombinant protein corresponding to amino acids of recombinant SMC1B.
Sequence	KSTMQLSVQAEENCLQTVNELMAKQQQLKDIRVTQNSSAEKVQTQIEEERKKFLAVDREVGKLQ KEVVSQTSLEQKRLEKHNLLLDCKVQDIEILLSGSLDDIIEVEMGTEAESTQATIDIYEKEEAFEIDY SSL
Host	Rabbit

Reactivity	Human
Form	Liquid
Purification	Antigen affinity purification
Isotype	IgG
Recommend Usage	Immunohistochemistry(1:200-1:500) Immunofluorescence (1-4 ug/ml) The optimal working dilution should be determined by the end user.
Storage Buffer	In PBS, pH 7.2 (40% glycerol, 0.02% sodium azide)
Storage Instruction	Store at 4°C. For long term storage store at -20°C. Aliquot to avoid repeated freezing and thawing.
Note	This product contains sodium azide: a POISONOUS AND HAZARDOUS SUBSTANCE which should be handled by trained staff only.

Applications

- Immunohistochemistry (Formalin/PFA-fixed paraffin-embedded sections)

Immunohistochemical staining of human testis with SMC1B polyclonal antibody (Cat # PAB28446) shows nuclear positivity in cells of seminiferous ducts.

- Immunofluorescence

Immunofluorescent staining of A-431 with sMC1B polyclonal antibody (Cat # PAB28446) at 1-4 ug/mL dilution shows positivity in nucleus but not nucleoli & cytoplasm.

Gene Info — SMC1B

Entrez GeneID	27127
Protein Accession#	Q8NDV3
Gene Name	SMC1B
Gene Alias	FLJ43748, SMC1BETA, SMC1L2, bK268H5, bK268H5.5
Gene Description	structural maintenance of chromosomes 1B
Omim ID	608685
Gene Ontology	Hyperlink

Gene Summary

SMC1L2 belongs to a family of proteins required for chromatid cohesion and DNA recombination during meiosis and mitosis (3:Revenkova et al., 2001 [PubMed 11564881]).[supplied by OMIM]

Other Designations

OTTHUMP00000028953|SMC1 (structural maintenance of chromosomes 1, yeast)-like 1|SMC1 structural maintenance of chromosomes 1-like 2|mitosis-specific chromosome segregation protein like protein beta

Pathway

- [Cell cycle](#)

Disease

- [Azoospermia](#)
- [Genetic Predisposition to Disease](#)
- [Head and Neck Neoplasms](#)
- [Neoplasm Recurrence](#)
- [Neoplasms](#)
- [Oligospermia](#)