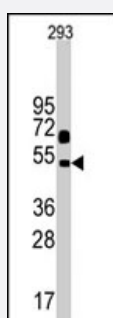


# NPTX1 polyclonal antibody

Catalog # PAB2844

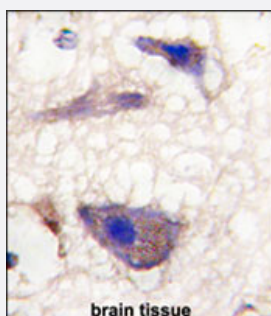
Size 400 uL

## Applications



### Western Blot (Cell lysate)

Western blot analysis of Nptx1 polyclonal antibody (Cat # PAB2844) in 293 cell line lysates (35 ug/lane). Nptx1 (arrow) was detected using the purified polyclonal antibody.



### Immunohistochemistry (Formalin/PFA-fixed paraffin-embedded sections)

Formalin-fixed and paraffin-embedded human brain tissue reacted with Nptx1 polyclonal antibody (Cat # PAB2844), which was peroxidase-conjugated to the secondary antibody, followed by DAB staining. This data demonstrates the use of this antibody for immunohistochemistry; clinical relevance has not been evaluated.

## Specification

<b>Product Description</b>	Rabbit polyclonal antibody raised against synthetic peptide of NPTX1.
<b>Immunogen</b>	A synthetic peptide (conjugated with KLH) corresponding to C-terminus of human NPTX1.
<b>Host</b>	Rabbit
<b>Reactivity</b>	Human
<b>Form</b>	Liquid
<b>Purification</b>	Protein G purification

<b>Recommend Usage</b>	Western Blot (1:1000) Immunohistochemistry (1:10-50) The optimal working dilution should be determined by the end user.
<b>Storage Buffer</b>	In PBS (0.09% sodium azide)
<b>Storage Instruction</b>	Store at 4°C. For long term storage store at -20°C. Aliquot to avoid repeated freezing and thawing.
<b>Note</b>	This product contains sodium azide: a POISONOUS AND HAZARDOUS SUBSTANCE which should be handled by trained staff only.

## Applications

- Western Blot (Cell lysate)

Western blot analysis of Nptx1 polyclonal antibody (Cat # PAB2844) in 293 cell line lysates (35 ug/lane). Nptx1 (arrow) was detected using the purified polyclonal antibody.

- Immunohistochemistry (Formalin/PFA-fixed paraffin-embedded sections)

Formalin-fixed and paraffin-embedded human brain tissue reacted with Nptx1 polyclonal antibody (Cat # PAB2844), which was peroxidase-conjugated to the secondary antibody, followed by DAB staining. This data demonstrates the use of this antibody for immunohistochemistry; clinical relevance has not been evaluated.

## Gene Info — NPTX1

<b>Entrez GeneID</b>	<a href="#">4884</a>
<b>Protein Accession#</b>	<a href="#">NP_714957;P47971</a>
<b>Gene Name</b>	NPTX1
<b>Gene Alias</b>	DKFZp686J2446, MGC105123, NP1
<b>Gene Description</b>	neuronal pentraxin I
<b>Omim ID</b>	<a href="#">602367</a>
<b>Gene Ontology</b>	<a href="#">Hyperlink</a>
<b>Gene Summary</b>	NPTX1 is a member of the neuronal pentraxin gene family. Neuronal pentraxin 1 is similar to the r at NP1 gene which encodes a binding protein for the snake venom toxin taipoxin. Human NPTX1 mRNA is exclusively localized to the nervous system. [provided by RefSeq]
<b>Other Designations</b>	-

## Publication Reference

- [Neuronal pentraxin 1: a novel mediator of hypoxic-ischemic injury in neonatal brain.](#)

Hossain MA, Russell JC, O'Brien R, Laterra J.

Journal of Neuroscience 2004 Apr; 24(17):4187.

Application: IF, IHC, WB, Rat, Brains, Primary cortical cultures

- [Neuronal pentraxin, a secreted protein with homology to acute phase proteins of the immune system.](#)

Schlimgen AK, Helms JA, Vogel H, Perin MS.

Neuron 1995 Mar; 14(3):519.

Application: WB-Re, WB-Ti, Rat, Rat brains, Recombinant protein