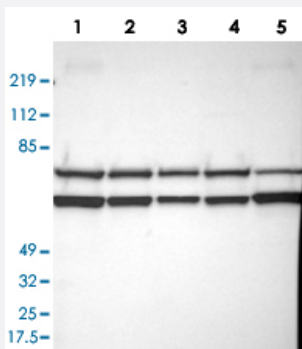


FLOT2 polyclonal antibody

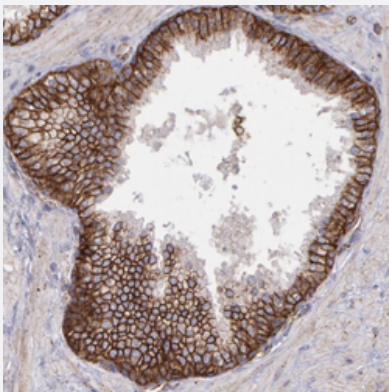
Catalog # PAB28427 Size 100 uL

Applications



Western Blot

Western blot analysis of Lane 1: RT-4, Lane 2: U-251 MG, Lane 3: A-431, Lane 4: Liver, Lane 5: Tonsil with FLOT2 polyclonal antibody (Cat # PAB28427).



Immunohistochemistry (Formalin/PFA-fixed paraffin-embedded sections)

Immunohistochemical staining of human prostate with FLOT2 polyclonal antibody (Cat # PAB28427) shows strong membranous and cytoplasmic positivity in glandular cells.

Specification

Product Description	Rabbit polyclonal antibody raised against recombinant FLOT2.
Immunogen	Recombinant protein corresponding to amino acids of recombinant FLOT2.
Sequence	ECKKEMLDVKFMADTKIADSKRAFELQKSAFSEEVNIKTAEAYELQGAREQQKIRQEEIEIV VQRKKQIAVEAQEILRTDKELIATVRRPAEAEAHRIQQIAEGEKVKQVLLAQAEAEKIRK
Host	Rabbit
Reactivity	Human, Mouse, Rat

Form	Liquid
Purification	Antigen affinity purification
Isotype	IgG
Recommend Usage	Immunohistochemistry(1:2500-1:5000) Western Blot(1:100-1:250) The optimal working dilution should be determined by the end user.
Storage Buffer	In PBS, pH 7.2 (40% glycerol, 0.02% sodium azide)
Storage Instruction	Store at 4°C. For long term storage store at -20°C. Aliquot to avoid repeated freezing and thawing.
Note	This product contains sodium azide: a POISONOUS AND HAZARDOUS SUBSTANCE which should be handled by trained staff only.

Applications

- Western Blot

Western blot analysis of Lane 1: RT-4, Lane 2: U-251 MG, Lane 3: A-431, Lane 4: Liver, Lane 5: Tonsil with FLOT2 polyclonal antibody (Cat # PAB28427).

- Immunohistochemistry (Formalin/PFA-fixed paraffin-embedded sections)

Immunohistochemical staining of human prostate with FLOT2 polyclonal antibody (Cat # PAB28427) shows strong membranous and cytoplasmic positivity in glandular cells.

Gene Info — FLOT2

Entrez GeneID	2319
Gene Name	FLOT2
Gene Alias	ECS-1, ECS1, ESA, ESA1, M17S1
Gene Description	flotillin 2
Omim ID	131560
Gene Ontology	Hyperlink
Gene Summary	Caveolae are small domains on the inner cell membrane involved in vesicular trafficking and signal transduction. This gene encodes a caveolae-associated, integral membrane protein, which is thought to function in neuronal signaling. [provided by RefSeq]

Other Designations

Flotillin 2 (epidermal surface antigen 1)|membrane component, chromosome 17, surface marker 1 (35kD protein identified by monoclonal antibody ECS-1)

Pathway

- [Insulin signaling pathway](#)