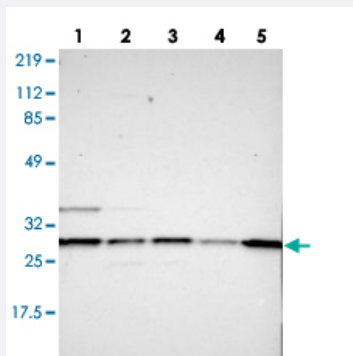


RAB27A polyclonal antibody

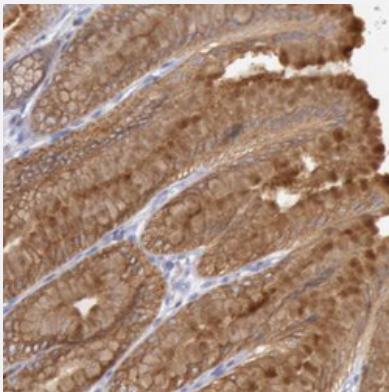
Catalog # PAB28415 Size 100 uL

Applications



Western Blot

Western blot analysis of lane 1: RT-4, lane 2: U-251 MG, lane 3: A-431, lane 4: Liver and lane 5: Tonsil using RAB27A polyclonal antibody (Cat # PAB28415).



Immunohistochemistry (Formalin/PFA-fixed paraffin-embedded sections)

Immunohistochemistry (Formalin/PFA-fixed paraffin-embedded sections) of human stomach with RAB27A polyclonal antibody (Cat # PAB28415) shows strong cytoplasmic positivity in glandular cells.

Specification

Product Description	Rabbit polyclonal antibody raised against recombinant RAB27A.
Immunogen	Recombinant protein corresponding to human RAB27A.
Sequence	LQLWDTAGQERFRSLTTAFFRDAMGFLLLFDLTNEQSFLNVRNWISQLQMAYCENPDMVLCGNK SDLEDQRRVVKKEEAIALAEKYGIPYFETSAANGTNISQAIEMLLDLIMKRMERCVDKSWIPEGVVR NGHASTDQLS
Host	Rabbit
Reactivity	Human

Form	Liquid
Purification	Antigen affinity purification
Isotype	IgG
Recommend Usage	Western Blot (1:250-1:500) Immunohistochemistry (Formalin/PFA-fixed paraffin-embedded sections) (1:200-1:500) The optimal working dilution should be determined by the end user.
Storage Buffer	In PBS, pH 7.2 (40% glycerol, 0.02% sodium azide)
Storage Instruction	Store at 4 °C. For long term storage store at -20°C. Aliquot to avoid repeated freezing and thawing.
Note	This product contains sodium azide: a POISONOUS AND HAZARDOUS SUBSTANCE which should be handled by trained staff only.

Applications

- Western Blot

Western blot analysis of lane 1: RT-4, lane 2: U-251 MG, lane 3: A-431, lane 4: Liver and lane 5: Tonsil using RAB27A polyclonal antibody (Cat # PAB28415).

- Immunohistochemistry (Formalin/PFA-fixed paraffin-embedded sections)

Immunohistochemistry (Formalin/PFA-fixed paraffin-embedded sections) of human stomach with RAB27A polyclonal antibody (Cat # PAB28415) shows strong cytoplasmic positivity in glandular cells.

Gene Info — RAB27A

Entrez GeneID	5873
Protein Accession#	P51159
Gene Name	RAB27A
Gene Alias	GS2, HsT18676, MGC117246, RAB27, RAM
Gene Description	RAB27A, member RAS oncogene family
Omim ID	603868 607624
Gene Ontology	Hyperlink

Gene Summary

The protein encoded by this gene belongs to the small GTPase superfamily, Rab family. The protein is membrane-bound and may be involved in protein transport and small GTPase mediated signal transduction. Mutations in this gene are associated with Griscelli syndrome type 2. Alternative splicing occurs at this locus and four transcript variants encoding the same protein have been identified. [provided by RefSeq]

Other Designations

GTP-binding protein Ram|Ras-related protein Rab-27A

Disease

- [Arthritis](#)
- [Genetic Predisposition to Disease](#)
- [Lymphohistiocytosis](#)