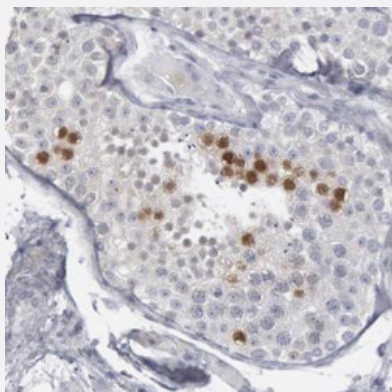


DMC1 polyclonal antibody

Catalog # PAB28400 Size 100 uL

Applications



Immunohistochemistry (Formalin/PFA-fixed paraffin-embedded sections)

Immunohistochemistry (Formalin/PFA-fixed paraffin-embedded sections) of human testis with DMC1 polyclonal antibody (Cat # PAB28400) shows strong nuclear positivity in subsets of cells in ductus seminiferus.

Specification

Product Description	Rabbit polyclonal antibody raised against recombinant DMC1.
Immunogen	Recombinant protein corresponding to human DMC1.
Sequence	AYTSEHQMELLDYVAAKFHEEAGIFKLLIDSIMALFRVDFSGRGELAERQQKLAQMLSLQKISEE YNVAVFVTNQMTADPGATMTFQADPKKPIGGHILAHASTTRISLRKGRGELRIAKIYDSPENEA TFAITA
Host	Rabbit
Reactivity	Human, Mouse, Rat
Form	Liquid
Purification	Antigen affinity purification
Isotype	IgG
Recommend Usage	Immunohistochemistry (Formalin/PFA-fixed paraffin-embedded sections) (1:50-1:200) The optimal working dilution should be determined by the end user.

Storage Buffer	In PBS, pH 7.2 (40% glycerol, 0.02% sodium azide)
Storage Instruction	Store at 4 °C. For long term storage store at -20°C. Aliquot to avoid repeated freezing and thawing.
Note	This product contains sodium azide: a POISONOUS AND HAZARDOUS SUBSTANCE which should be handled by trained staff only.

Applications

- Immunohistochemistry (Formalin/PFA-fixed paraffin-embedded sections)

Immunohistochemistry (Formalin/PFA-fixed paraffin-embedded sections) of human testis with DMC1 polyclonal antibody (Cat # PAB28400) shows strong nuclear positivity in subsets of cells in ductus seminiferus.

Gene Info — DMC1

Entrez GeneID	11144
Protein Accession#	Q14565
Gene Name	DMC1
Gene Alias	DMC1H, HsLim15, LIM15, MGC150472, MGC150473, dJ199H16.1
Gene Description	DMC1 dosage suppressor of mck1 homolog, meiosis-specific homologous recombination (yeast)
Omim ID	602721
Gene Ontology	Hyperlink
Gene Summary	The protein encoded by this gene is essential for meiotic homologous recombination. Genetic recombination in meiosis plays an important role in generating diversity of genetic information. The product of this gene is structurally and evolutionary related to the products of the yeast RAD51 and E. coli RecA genes. Alternative splice variants of this gene have been described but their full-length nature has not been determined. [provided by RefSeq]
Other Designations	DMC1 dosage suppressor of mck1 homolog DMC1 homologue disrupted meiotic cDNA1, yeast, homolog of meiotic recombination protein DMC1/LIM15 homolog

Disease

- [Azoospermia](#)

- [Breast Neoplasms](#)
- [Genetic Predisposition to Disease](#)
- [Kidney Failure](#)
- [Oligospermia](#)
- [Ovarian Failure](#)