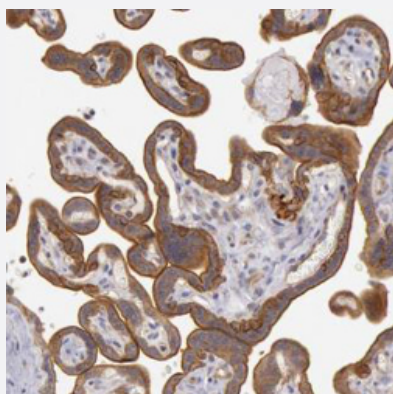


AMOTL1 polyclonal antibody

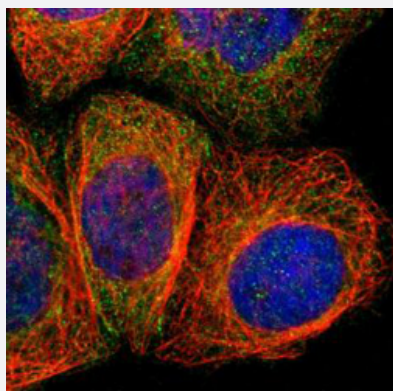
Catalog # PAB28392 Size 100 uL

Applications



Immunohistochemistry (Formalin/PFA-fixed paraffin-embedded sections)

Immunohistochemistry (Formalin/PFA-fixed paraffin-embedded sections) of human placenta with AMOTL1 polyclonal antibody (Cat # PAB28392) shows strong cytoplasmic and membranous positivity in trophoblastic cells.



Immunofluorescence

Immunofluorescence of A-431 cell line with AMOTL1 polyclonal antibody (Cat # PAB28392) shows positivity in cytoplasm and cell junctions.
Fixation/Permeabilization: PFA/Triton X-100

Specification

Product Description	Rabbit polyclonal antibody raised against recombinant AMOTL1.
Immunogen	Recombinant protein corresponding to human AMOTL1.
Sequence	SPSACYSPSSPVQVLEDSTYFSPDFQLYSGRHETSALTVEATSSIREKVVEDPLCNFHSPNFLRIS EVMRGSEDAAGTVLQRLIQEQLRYGTP TENMNL LAIQHQATGSAGPAHPTNNFSSTENLTQED PQM VYQSARQEPQGQEHQV
Host	Rabbit

Reactivity	Human
Form	Liquid
Purification	Antigen affinity purification
Isotype	IgG
Recommend Usage	Immunohistochemistry (Formalin/PFA-fixed paraffin-embedded sections) (1:50-1:200) Immunofluorescence (1-4 ug/ml) The optimal working dilution should be determined by the end user.
Storage Buffer	In PBS, pH 7.2 (40% glycerol, 0.02% sodium azide)
Storage Instruction	Store at 4 °C. For long term storage store at -20°C. Aliquot to avoid repeated freezing and thawing.
Note	This product contains sodium azide: a POISONOUS AND HAZARDOUS SUBSTANCE which should be handled by trained staff only.

Applications

- Immunohistochemistry (Formalin/PFA-fixed paraffin-embedded sections)

Immunohistochemistry (Formalin/PFA-fixed paraffin-embedded sections) of human placenta with AMOTL1 polyclonal antibody (Cat # PAB28392) shows strong cytoplasmic and membranous positivity in trophoblastic cells.

- Immunofluorescence

Immunofluorescence of A-431 cell line with AMOTL1 polyclonal antibody (Cat # PAB28392) shows positivity in cytoplasm and cell junctions. Fixation/Permeabilization: PFA/Triton X-100

Gene Info — AMOTL1

Entrez GeneID	154810
Protein Accession#	E7ESY6
Gene Name	AMOTL1
Gene Alias	JEAP
Gene Description	angiomin like 1
Gene Ontology	Hyperlink

Gene Summary

The protein encoded by this gene is a peripheral membrane protein that is a component of tight junctions or TJs. TJs form an apical junctional structure and act to control paracellular permeability and maintain cell polarity. This protein is related to angiotensin, an angiotensin binding protein that regulates endothelial cell migration and capillary formation. [provided by RefSeq]

Other Designations

junction-enriched and associated protein

Pathway

- [Tight junction](#)