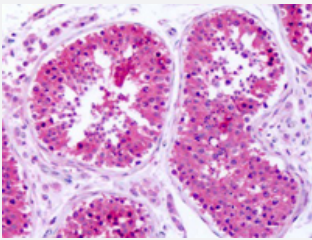


SLC1A4 polyclonal antibody

Catalog # PAB28378

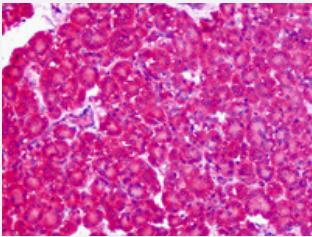
Size 50 ug

Applications



Immunohistochemistry (Formalin/PFA-fixed paraffin-embedded sections)

Immunohistochemistry (Formalin/PFA-fixed paraffin-embedded sections) of human testis with SLC1A4 polyclonal antibody (Cat # PAB28378).
Immunohistochemistry of formalin-fixed, paraffin-embedded tissue after heat-induced antigen retrieval.



Immunohistochemistry (Formalin/PFA-fixed paraffin-embedded sections)

Immunohistochemistry (Formalin/PFA-fixed paraffin-embedded sections) of human pancreas with SLC1A4 polyclonal antibody (Cat # PAB28378).
Immunohistochemistry of formalin-fixed, paraffin-embedded tissue after heat-induced antigen retrieval.

Specification

Product Description	Rabbit polyclonal antibody raised against synthetic peptide of SLC1A4.
Immunogen	A synthetic peptide corresponding to 17 amino acids at N-Terminus of human SLC1A4.
Host	Rabbit
Reactivity	Human, Monkey
Specificity	BLAST analysis of the peptide immunogen showed no homology with other human proteins.
Form	Liquid
Purification	Immunoaffinity chromatography

Recommend Usage	Immunohistochemistry (Formalin/PFA-fixed paraffin-embedded sections) (2.5 ug/ml) The optimal working dilution should be determined by the end user.
Storage Buffer	In PBS (0.09% sodium azide)
Storage Instruction	Store at 4°C. For long term storage store at -80°C. Aliquot to avoid repeated freezing and thawing.
Note	This product contains sodium azide: a POISONOUS AND HAZARDOUS SUBSTANCE which should be handled by trained staff only.

Applications

- Immunohistochemistry (Formalin/PFA-fixed paraffin-embedded sections)

Immunohistochemistry (Formalin/PFA-fixed paraffin-embedded sections) of human testis with SLC1A4 polyclonal antibody (Cat # PAB28378). Immunohistochemistry of formalin-fixed, paraffin-embedded tissue after heat-induced antigen retrieval.

- Immunohistochemistry (Formalin/PFA-fixed paraffin-embedded sections)

Immunohistochemistry (Formalin/PFA-fixed paraffin-embedded sections) of human pancreas with SLC1A4 polyclonal antibody (Cat # PAB28378). Immunohistochemistry of formalin-fixed, paraffin-embedded tissue after heat-induced antigen retrieval.

Gene Info — SLC1A4

Entrez GeneID	6509
Protein Accession#	P43007
Gene Name	SLC1A4
Gene Alias	ASCT1, SATT
Gene Description	solute carrier family 1 (glutamate/neutral amino acid transporter), member 4
Omim ID	600229
Gene Ontology	Hyperlink
Gene Summary	O
Other Designations	alanine/serine/cysteine/threonine transporter glutamate/neutral amino acid transporter solute carrier family 1, member 4

Disease

- [Bipolar Disorder](#)
- [Genetic Predisposition to Disease](#)
- [Hartnup Disease](#)
- [Hyperparathyroidism](#)
- [Mental Disorders](#)
- [Multiple System Atrophy](#)
- [Schizophrenia](#)