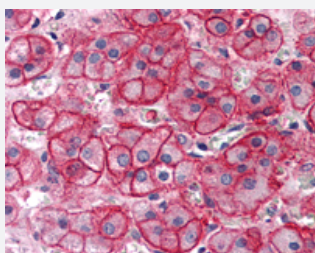


# SLC1A4 polyclonal antibody

Catalog # PAB28377

Size 50 ug

## Applications



### Immunohistochemistry (Formalin/PFA-fixed paraffin-embedded sections)

Immunohistochemistry (Formalin/PFA-fixed paraffin-embedded sections) of human adrenal with SLC1A4 polyclonal antibody (Cat # PAB28377).  
Immunohistochemistry of formalin-fixed, paraffin-embedded tissue after heat-induced antigen retrieval.

## Specification

<b>Product Description</b>	Rabbit polyclonal antibody raised against synthetic peptide of SLC1A4.
<b>Immunogen</b>	A synthetic peptide corresponding to 14 amino acids at C-Terminus of human SLC1A4.
<b>Host</b>	Rabbit
<b>Reactivity</b>	Human
<b>Specificity</b>	BLAST analysis of the peptide immunogen showed no homology with other human proteins.
<b>Form</b>	Liquid
<b>Purification</b>	Immunoaffinity chromatography
<b>Recommend Usage</b>	Immunohistochemistry (Formalin/PFA-fixed paraffin-embedded sections) (2.5 ug/ml) The optimal working dilution should be determined by the end user.
<b>Storage Buffer</b>	In PBS (0.09% sodium azide)
<b>Storage Instruction</b>	Store at 4°C. For long term storage store at -80°C. Aliquot to avoid repeated freezing and thawing.

**Note**

This product contains sodium azide: a POISONOUS AND HAZARDOUS SUBSTANCE which should be handled by trained staff only.

## Applications

- Immunohistochemistry (Formalin/PFA-fixed paraffin-embedded sections)

Immunohistochemistry (Formalin/PFA-fixed paraffin-embedded sections) of human adrenal with SLC1A4 polyclonal antibody (Cat # PAB28377). Immunohistochemistry of formalin-fixed, paraffin-embedded tissue after heat-induced antigen retrieval.

## Gene Info — SLC1A4

Entrez GeneID [6509](#)

Protein Accession# [P43007](#)

Gene Name SLC1A4

Gene Alias ASCT1, SATT

Gene Description solute carrier family 1 (glutamate/neutral amino acid transporter), member 4

Omim ID [600229](#)

Gene Ontology [Hyperlink](#)

Gene Summary O

Other Designations alanine/serine/cysteine/threonine transporter|glutamate/neutral amino acid transporter|solute carrier family 1, member 4

## Disease

- [Bipolar Disorder](#)
- [Genetic Predisposition to Disease](#)
- [Hartnup Disease](#)
- [Hyperparathyroidism](#)
- [Mental Disorders](#)
- [Multiple System Atrophy](#)

- [Schizophrenia](#)