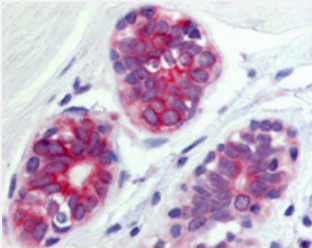


WNT6 polyclonal antibody

Catalog # PAB28363

Size 50 ug

Applications



Immunohistochemistry (Formalin/PFA-fixed paraffin-embedded sections)

Immunohistochemistry (Formalin/PFA-fixed paraffin-embedded sections) of human breast epithelium with WNT6 polyclonal antibody (Cat # PAB28363). Immunohistochemistry of formalin-fixed, paraffin-embedded tissue after heat-induced antigen retrieval.

Specification

| | |
|----------------------------|---|
| Product Description | Rabbit polyclonal antibody raised against synthetic peptide of WNT6. |
| Immunogen | A synthetic peptide corresponding to 18 amino acids at internal region of human WNT6. |
| Host | Rabbit |
| Reactivity | Bovine, Dog, Horse, Human, Rabbit, Bats |
| Specificity | BLAST analysis of the peptide immunogen showed no homology with other human proteins. |
| Form | Liquid |
| Purification | Immunoaffinity chromatography |
| Recommend Usage | Immunohistochemistry (Formalin/PFA-fixed paraffin-embedded sections) (20 ug/ml) The optimal working dilution should be determined by the end user. |
| Storage Buffer | In PBS (0.09% sodium azide) |
| Storage Instruction | Store at 4°C. For long term storage store at -80°C. Aliquot to avoid repeated freezing and thawing. |

Note

This product contains sodium azide: a POISONOUS AND HAZARDOUS SUBSTANCE which should be handled by trained staff only.

Applications

- Immunohistochemistry (Formalin/PFA-fixed paraffin-embedded sections)

Immunohistochemistry (Formalin/PFA-fixed paraffin-embedded sections) of human breast epithelium with WNT6 polyclonal antibody (Cat # PAB28363). Immunohistochemistry of formalin-fixed, paraffin-embedded tissue after heat-induced antigen retrieval.

Gene Info — WNT6

Entrez GeneID [7475](#)

Protein Accession# [Q9Y6F9](#)

Gene Name WNT6

Gene Alias -

Gene Description wingless-type MMTV integration site family, member 6

Omim ID [604663](#)

Gene Ontology [Hyperlink](#)

Gene Summary

The WNT gene family consists of structurally related genes which encode secreted signaling proteins. These proteins have been implicated in oncogenesis and in several developmental processes, including regulation of cell fate and patterning during embryogenesis. This gene is a member of the WNT gene family. It is overexpressed in cervical cancer cell line and strongly coexpressed with another family member, WNT10A, in colorectal cancer cell line. The gene overexpression may play key roles in carcinogenesis. This gene and the WNT10A gene are clustered in the chromosome 2q35 region. The protein encoded by this gene is 97% identical to the mouse Wnt6 protein at the amino acid level. [provided by RefSeq]

Other Designations -

Pathway

- [Basal cell carcinoma](#)
- [Hedgehog signaling pathway](#)
- [Melanogenesis](#)

- [Pathways in cancer](#)
- [Wnt signaling pathway](#)

Disease

- [Cleft Lip](#)
- [Cleft Palate](#)
- [Genetic Predisposition to Disease](#)