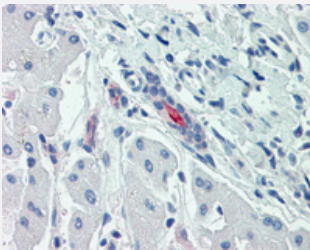


# SLC5A1 polyclonal antibody

Catalog # PAB28360

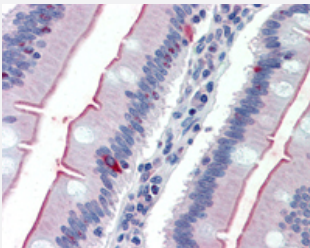
Size 50 ug

## Applications



### Immunohistochemistry (Formalin/PFA-fixed paraffin-embedded sections)

Immunohistochemistry (Formalin/PFA-fixed paraffin-embedded sections) of human liver with SLC5A1 polyclonal antibody (Cat # PAB28360).  
Immunohistochemistry of formalin-fixed, paraffin-embedded tissue after heat-induced antigen retrieval.



### Immunohistochemistry (Formalin/PFA-fixed paraffin-embedded sections)

Immunohistochemistry (Formalin/PFA-fixed paraffin-embedded sections) of human small intestine with SLC5A1 polyclonal antibody (Cat # PAB28360).  
Immunohistochemistry of formalin-fixed, paraffin-embedded tissue after heat-induced antigen retrieval.

## Specification

<b>Product Description</b>	Rabbit polyclonal antibody raised against synthetic peptide of SLC5A1.
<b>Immunogen</b>	A synthetic peptide corresponding to 14 amino acids at internal region of human SLC5A1.
<b>Host</b>	Rabbit
<b>Reactivity</b>	Human
<b>Specificity</b>	BLAST analysis of the peptide immunogen showed no homology with other human proteins.
<b>Form</b>	Liquid
<b>Purification</b>	Immunoaffinity chromatography

<b>Recommend Usage</b>	Immunohistochemistry (Formalin/PFA-fixed paraffin-embedded sections) (10-15 ug/ml) The optimal working dilution should be determined by the end user.
<b>Storage Buffer</b>	In PBS (0.09% sodium azide)
<b>Storage Instruction</b>	Store at 4°C. For long term storage store at -80°C. Aliquot to avoid repeated freezing and thawing.
<b>Note</b>	This product contains sodium azide: a POISONOUS AND HAZARDOUS SUBSTANCE which should be handled by trained staff only.

## Applications

- Immunohistochemistry (Formalin/PFA-fixed paraffin-embedded sections)

Immunohistochemistry (Formalin/PFA-fixed paraffin-embedded sections) of human liver with SLC5A1 polyclonal antibody (Cat # PAB28360). Immunohistochemistry of formalin-fixed, paraffin-embedded tissue after heat-induced antigen retrieval.

- Immunohistochemistry (Formalin/PFA-fixed paraffin-embedded sections)

Immunohistochemistry (Formalin/PFA-fixed paraffin-embedded sections) of human small intestine with SLC5A1 polyclonal antibody (Cat # PAB28360). Immunohistochemistry of formalin-fixed, paraffin-embedded tissue after heat-induced antigen retrieval.

## Gene Info — SLC5A1

<b>Entrez GeneID</b>	<a href="#">6523</a>
<b>Protein Accession#</b>	<a href="#">P13866</a>
<b>Gene Name</b>	SLC5A1
<b>Gene Alias</b>	D22S675, NAGT, SGLT1
<b>Gene Description</b>	solute carrier family 5 (sodium/glucose cotransporter), member 1
<b>Omim ID</b>	<a href="#">182380 606824</a>
<b>Gene Ontology</b>	<a href="#">Hyperlink</a>
<b>Gene Summary</b>	Glucose transporters are integral membrane proteins that mediate the transport of glucose and structurally-related substances across cellular membranes. Two families of glucose transporter have been identified: the facilitated-diffusion glucose transporter family (GLUT family), also known as 'uniporters,' and the sodium-dependent glucose transporter family (SGLT family), also known as 'cotransporters' or 'symporters' (Wright et al., 1994 [PubMed 7823022]). The SLC5A1 gene encodes a protein that is involved in the active transport of glucose and galactose into eukaryotic and some prokaryotic cells.[supplied by OMIM]

**Other Designations**

Human Na<sup>+</sup>/glucose cotransporter 1 mRNA, complete cds|sodium/glucose cotransporter 1|solute carrier family 5 (sodium/glucose transporter), member 1

---

**Disease**

- [Genetic Predisposition to Disease](#)
- [Hyperparathyroidism](#)
- [Tobacco Use Disorder](#)