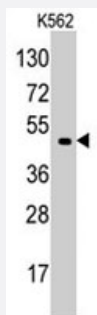


EIF4A1 polyclonal antibody

Catalog # PAB2836

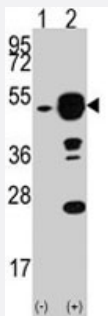
Size 400 uL

Applications



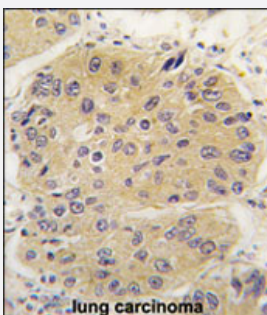
Western Blot (Cell lysate)

Western blot analysis of EIF4A1 polyclonal antibody (Cat # PAB2836) in K-562 cell line lysates (35 ug/lane). EIF4A1 (arrow) was detected using the purified polyclonal antibody.



Western Blot (Transfected lysate)

Western blot analysis of EIF4A1 (arrow) using rabbit EIF4A1 polyclonal antibody (Cat # PAB2836). 293 cell lysates (2 ug/lane) either nontransfected (Lane 1) or transiently transfected with the EIF4A1 gene (Lane 2) (Origene Technologies).



Immunohistochemistry (Formalin/PFA-fixed paraffin-embedded sections)

Formalin-fixed and paraffin-embedded human lung carcinoma tissue reacted with EIF4A1 polyclonal antibody (Cat # PAB2836), which was peroxidase-conjugated to the secondary antibody, followed by DAB staining. This data demonstrates the use of this antibody for immunohistochemistry; clinical relevance has not been evaluated.

Specification

Product Description

Rabbit polyclonal antibody raised against synthetic peptide of EIF4A1.

Immunogen

A synthetic peptide (conjugated with KLH) corresponding to N-terminus of human EIF4A1.

Host	Rabbit
Reactivity	Human
Form	Liquid
Purification	Ammonium sulfate precipitation
Recommend Usage	Western Blot (1:1000) Immunohistochemistry (1:10-50) The optimal working dilution should be determined by the end user.
Storage Buffer	In PBS (0.09% sodium azide)
Storage Instruction	Store at 4°C. For long term storage store at -20°C. Aliquot to avoid repeated freezing and thawing.
Note	This product contains sodium azide: a POISONOUS AND HAZARDOUS SUBSTANCE which should be handled by trained staff only.

Applications

- Western Blot (Cell lysate)

Western blot analysis of EIF4A1 polyclonal antibody (Cat # PAB2836) in K-562 cell line lysates (35 ug/lane). EIF4A1 (arrow) was detected using the purified polyclonal antibody.

- Western Blot (Transfected lysate)

Western blot analysis of EIF4A1 (arrow) using rabbit EIF4A1 polyclonal antibody (Cat # PAB2836). 293 cell lysates (2 ug/lane) either nontransfected (Lane 1) or transiently transfected with the EIF4A1 gene (Lane 2) (Origene Technologies).

- Immunohistochemistry (Formalin/PFA-fixed paraffin-embedded sections)

Formalin-fixed and paraffin-embedded human lung carcinoma tissue reacted with EIF4A1 polyclonal antibody (Cat # PAB2836), which was peroxidase-conjugated to the secondary antibody, followed by DAB staining. This data demonstrates the use of this antibody for immunohistochemistry; clinical relevance has not been evaluated.

Gene Info — EIF4A1

Entrez GeneID	1973
Protein Accession#	NP_001407:P60842
Gene Name	EIF4A1
Gene Alias	DDX2A, EIF-4A, EIF4A

Gene Description	eukaryotic translation initiation factor 4A, isoform 1
Omim ID	602641
Gene Ontology	Hyperlink
Gene Summary	O
Other Designations	OTTHUMP00000135288 eukaryotic initiation factor 4A eukaryotic translation initiation factor 4A i soform 1

Publication Reference

- [PDCD4 inhibits translation initiation by binding to eIF4A using both its MA3 domains.](#)

Suzuki C, Garces RG, Edmonds KA, Hiller S, Hyberts SG, Marintchev A, Wagner G.
PNAS 2008 Mar; 105(9):3274.

- [Anti-inflammatory lipid mediator 15d-PGJ2 inhibits translation through inactivation of eIF4A.](#)

Kim WJ, Kim JH, Jang SK.
The EMBO Journal 2007 Nov; 26(24):5020.