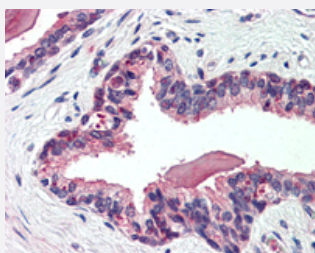


SLC12A2 polyclonal antibody

Catalog # PAB28358

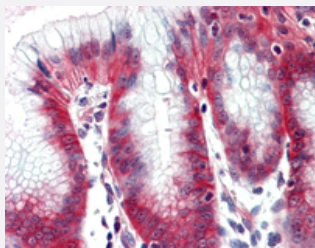
Size 50 ug

Applications



Immunohistochemistry (Formalin/PFA-fixed paraffin-embedded sections)

Immunohistochemistry (Formalin/PFA-fixed paraffin-embedded sections) of human prostate with SLC12A2 polyclonal antibody (Cat # PAB28358). Immunohistochemistry of formalin-fixed, paraffin-embedded tissue after heat-induced antigen retrieval.



Immunohistochemistry (Formalin/PFA-fixed paraffin-embedded sections)

Immunohistochemistry (Formalin/PFA-fixed paraffin-embedded sections) of human stomach with SLC12A2 polyclonal antibody (Cat # PAB28358). Immunohistochemistry of formalin-fixed, paraffin-embedded tissue after heat-induced antigen retrieval.

Specification

Product Description	Rabbit polyclonal antibody raised against synthetic peptide of SLC12A2.
Immunogen	A synthetic peptide corresponding to 15 amino acids at internal region of human SLC12A2.
Host	Rabbit
Reactivity	Bovine, Dog, Guinea pig, Horse, Human, Monkey, Mouse, Pig, Rat
Specificity	BLAST analysis of the peptide immunogen showed no homology with other human proteins.
Form	Liquid
Purification	Immunoaffinity chromatography

Recommend Usage	Immunohistochemistry (Formalin/PFA-fixed paraffin-embedded sections) (5-10 ug/ml) The optimal working dilution should be determined by the end user.
Storage Buffer	In PBS (0.09% sodium azide)
Storage Instruction	Store at 4°C. For long term storage store at -80°C. Aliquot to avoid repeated freezing and thawing.
Note	This product contains sodium azide: a POISONOUS AND HAZARDOUS SUBSTANCE which should be handled by trained staff only.

Applications

- Immunohistochemistry (Formalin/PFA-fixed paraffin-embedded sections)

Immunohistochemistry (Formalin/PFA-fixed paraffin-embedded sections) of human prostate with SLC12A2 polyclonal antibody (Cat # PAB28358). Immunohistochemistry of formalin-fixed, paraffin-embedded tissue after heat-induced antigen retrieval.

- Immunohistochemistry (Formalin/PFA-fixed paraffin-embedded sections)

Immunohistochemistry (Formalin/PFA-fixed paraffin-embedded sections) of human stomach with SLC12A2 polyclonal antibody (Cat # PAB28358). Immunohistochemistry of formalin-fixed, paraffin-embedded tissue after heat-induced antigen retrieval.

Gene Info — SLC12A2

Entrez GeneID	6558
Protein Accession#	P55011
Gene Name	SLC12A2
Gene Alias	BSC, BSC2, MGC104233, NKCC1
Gene Description	solute carrier family 12 (sodium/potassium/chloride transporters), member 2
Omim ID	600840
Gene Ontology	Hyperlink
Gene Summary	By moving chloride into epithelial cells, the Na-K-Cl cotransporter SLC12A2 aids transcellular movement of chloride across both secretory and absorptive epithelia (Payne et al., 1995 [PubMed 7629105]). See also SLC12A1 (MIM 600839) and SLC12A3 (MIM 600968).[supplied by OMIM]
Other Designations	basolateral Na-K-Cl symporter bumetanide-sensitive sodium-(potassium)-chloride cotransporter 1

Pathway

- [Vibrio cholerae infection](#)

Disease

- [Celiac Disease](#)
- [Genetic Predisposition to Disease](#)
- [Hearing Loss](#)
- [Schizophrenia](#)
- [Tobacco Use Disorder](#)