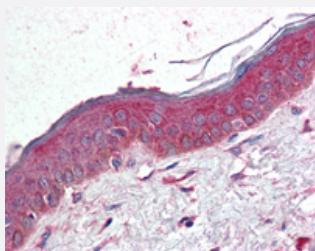


# TSPAN6 polyclonal antibody

Catalog # PAB28355

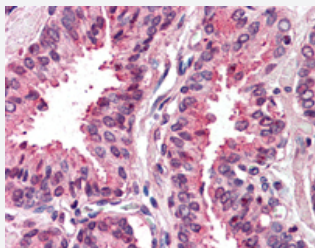
Size 50 ug

## Applications



### Immunohistochemistry (Formalin/PFA-fixed paraffin-embedded sections)

Immunohistochemistry (Formalin/PFA-fixed paraffin-embedded sections) of human skin with TSPAN6 polyclonal antibody (Cat # PAB28355).  
Immunohistochemistry of formalin-fixed, paraffin-embedded tissue after heat-induced antigen retrieval.



### Immunohistochemistry (Formalin/PFA-fixed paraffin-embedded sections)

Immunohistochemistry (Formalin/PFA-fixed paraffin-embedded sections) of human prostate with TSPAN6 polyclonal antibody (Cat # PAB28355).  
Immunohistochemistry of formalin-fixed, paraffin-embedded tissue after heat-induced antigen retrieval.

## Specification

<b>Product Description</b>	Rabbit polyclonal antibody raised against synthetic peptide of TSPAN6.
<b>Immunogen</b>	A synthetic peptide corresponding to 18 amino acids at internal region of human TSPAN6.
<b>Host</b>	Rabbit
<b>Reactivity</b>	Human
<b>Specificity</b>	BLAST analysis of the peptide immunogen showed no homology with other human proteins.
<b>Form</b>	Liquid
<b>Purification</b>	Immunoaffinity chromatography

<b>Recommend Usage</b>	Immunohistochemistry (Formalin/PFA-fixed paraffin-embedded sections) (10 ug/ml) The optimal working dilution should be determined by the end user.
<b>Storage Buffer</b>	In PBS (0.09% sodium azide)
<b>Storage Instruction</b>	Store at 4°C. For long term storage store at -80°C. Aliquot to avoid repeated freezing and thawing.
<b>Note</b>	This product contains sodium azide: a POISONOUS AND HAZARDOUS SUBSTANCE which should be handled by trained staff only.

## Applications

- Immunohistochemistry (Formalin/PFA-fixed paraffin-embedded sections)

Immunohistochemistry (Formalin/PFA-fixed paraffin-embedded sections) of human skin with TSPAN6 polyclonal antibody (Cat # PAB28355). Immunohistochemistry of formalin-fixed, paraffin-embedded tissue after heat-induced antigen retrieval.

- Immunohistochemistry (Formalin/PFA-fixed paraffin-embedded sections)

Immunohistochemistry (Formalin/PFA-fixed paraffin-embedded sections) of human prostate with TSPAN6 polyclonal antibody (Cat # PAB28355). Immunohistochemistry of formalin-fixed, paraffin-embedded tissue after heat-induced antigen retrieval.

## Gene Info — TSPAN6

<b>Entrez GeneID</b>	<a href="#">7105</a>
<b>Protein Accession#</b>	<a href="#">O43657</a>
<b>Gene Name</b>	TSPAN6
<b>Gene Alias</b>	T245, TM4SF6, TSPAN-6
<b>Gene Description</b>	tetraspanin 6
<b>Omim ID</b>	<a href="#">300191</a>
<b>Gene Ontology</b>	<a href="#">Hyperlink</a>
<b>Gene Summary</b>	The protein encoded by this gene is a member of the transmembrane 4 superfamily, also known as the tetraspanin family. Most of these members are cell-surface proteins that are characterized by the presence of four hydrophobic domains. The proteins mediate signal transduction events that play a role in the regulation of cell development, activation, growth and motility. This encoded protein is a cell surface glycoprotein and is highly similar in sequence to the transmembrane 4 superfamily member 2. The use of alternate polyadenylation sites has been found for this gene. [provided by RefSeq]

**Other Designations**

A15 homolog|OTTHUMP00000023652|tetraspan TM4SF|tetraspanin TM4-D|transmembrane 4 superfamily member 6

---