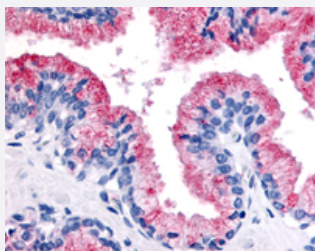


WNT8A polyclonal antibody

Catalog # PAB28354

Size 50 ug

Applications



Immunohistochemistry (Formalin/PFA-fixed paraffin-embedded sections)

Immunohistochemistry (Formalin/PFA-fixed paraffin-embedded sections) of human prostate with WNT8A polyclonal antibody (Cat # PAB28354).
Immunohistochemistry of formalin-fixed, paraffin-embedded tissue after heat-induced antigen retrieval.

Specification

Product Description	Rabbit polyclonal antibody raised against synthetic peptide of WNT8A.
Immunogen	A synthetic peptide corresponding to 14 amino acids at internal region of human WNT8A.
Host	Rabbit
Reactivity	Human
Specificity	BLAST analysis of the peptide immunogen showed no homology with other human proteins, except CYP2D6 (64%).
Form	Liquid
Purification	Immunoaffinity chromatography
Recommend Usage	Immunohistochemistry (Formalin/PFA-fixed paraffin-embedded sections) (5 ug/ml) The optimal working dilution should be determined by the end user.
Storage Buffer	In PBS (0.09% sodium azide)
Storage Instruction	Store at 4°C. For long term storage store at -80°C. Aliquot to avoid repeated freezing and thawing.

Note

This product contains sodium azide: a POISONOUS AND HAZARDOUS SUBSTANCE which should be handled by trained staff only.

Applications

- Immunohistochemistry (Formalin/PFA-fixed paraffin-embedded sections)

Immunohistochemistry (Formalin/PFA-fixed paraffin-embedded sections) of human prostate with WNT8A polyclonal antibody (Cat # PAB28354). Immunohistochemistry of formalin-fixed, paraffin-embedded tissue after heat-induced antigen retrieval.

Gene Info — WNT8A

Entrez GeneID [7478](#)

Protein Accession# [Q9H1J5](#)

Gene Name WNT8A

Gene Alias WNT8D

Gene Description wingless-type MMTV integration site family, member 8A

Omim ID [606360](#)

Gene Ontology [Hyperlink](#)

Gene Summary The WNT gene family consists of structurally related genes which encode secreted signaling proteins. These proteins have been implicated in oncogenesis and in several developmental processes, including regulation of cell fate and patterning during embryogenesis. This gene is a member of the WNT gene family, and may be implicated in development of early embryos as well as germ cell tumors. It encodes a protein which shows 81% amino acid identity to the mouse Wnt8A protein. [provided by RefSeq]

Other Designations OTTHUMP00000180556|WNT8d

Pathway

- [Basal cell carcinoma](#)
- [Hedgehog signaling pathway](#)
- [Melanogenesis](#)
- [Pathways in cancer](#)

- [Wnt signaling pathway](#)

Disease

- [Cleft Lip](#)
- [Cleft Palate](#)
- [Genetic Predisposition to Disease](#)