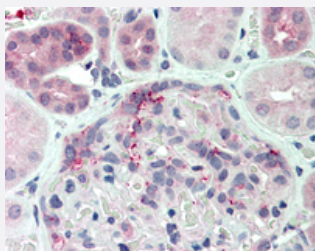


# DUSP22 polyclonal antibody

Catalog # PAB28346

Size 50 ug

## Applications



### Immunohistochemistry (Formalin/PFA-fixed paraffin-embedded sections)

Immunohistochemistry (Formalin/PFA-fixed paraffin-embedded sections) of human kidney with DUSP22 polyclonal antibody (Cat # PAB28346).  
Immunohistochemistry of formalin-fixed, paraffin-embedded tissue after heat-induced antigen retrieval.

## Specification

<b>Product Description</b>	Rabbit polyclonal antibody raised against synthetic peptide of DUSP22.
<b>Immunogen</b>	A synthetic peptide corresponding to 17 amino acids at N-terminus of human DUSP22.
<b>Host</b>	Rabbit
<b>Reactivity</b>	Bovine, Horse, Human, Monkey, Rabbit
<b>Specificity</b>	BLAST analysis of the peptide immunogen showed no homology with other human proteins, except DUSP15 (59%).
<b>Form</b>	Liquid
<b>Purification</b>	Immunoaffinity chromatography
<b>Recommend Usage</b>	Immunohistochemistry (Formalin/PFA-fixed paraffin-embedded sections) (2-22 ug/ml) The optimal working dilution should be determined by the end user.
<b>Storage Buffer</b>	In PBS (0.09% sodium azide)
<b>Storage Instruction</b>	Store at 4°C. For long term storage store at -80°C. Aliquot to avoid repeated freezing and thawing.

**Note**

This product contains sodium azide: a POISONOUS AND HAZARDOUS SUBSTANCE which should be handled by trained staff only.

## Applications

- Immunohistochemistry (Formalin/PFA-fixed paraffin-embedded sections)

Immunohistochemistry (Formalin/PFA-fixed paraffin-embedded sections) of human kidney with DUSP22 polyclonal antibody (Cat # PAB28346). Immunohistochemistry of formalin-fixed, paraffin-embedded tissue after heat-induced antigen retrieval.

## Gene Info — DUSP22

**Entrez GeneID** [56940](#)

**Protein Accession#** [Q9NRW4](#)

**Gene Name** DUSP22

**Gene Alias** JKAP, JSP1, MKPX, VHX

**Gene Description** dual specificity phosphatase 22

**Gene Ontology** [Hyperlink](#)

**Other Designations** JNK-stimulating phosphatase 1|OTTHUMP00000015938|homolog of mouse dual specificity phosphatase LMW-DSP2|mitogen-activated protein kinase phosphatase x