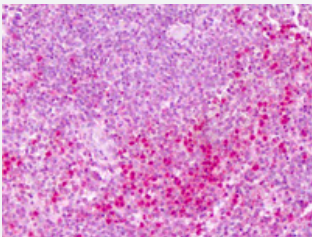


PTPRE polyclonal antibody

Catalog # PAB28343

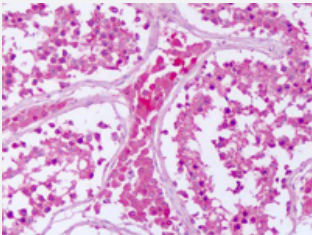
Size 50 ug

Applications



Immunohistochemistry (Formalin/PFA-fixed paraffin-embedded sections)

Immunohistochemistry (Formalin/PFA-fixed paraffin-embedded sections) of human spleen with PTPRE polyclonal antibody (Cat # PAB28343).
Immunohistochemistry of formalin-fixed, paraffin-embedded tissue after heat-induced antigen retrieval.



Immunohistochemistry (Formalin/PFA-fixed paraffin-embedded sections)

Immunohistochemistry (Formalin/PFA-fixed paraffin-embedded sections) of human testis with PTPRE polyclonal antibody (Cat # PAB28343).
Immunohistochemistry of formalin-fixed, paraffin-embedded tissue after heat-induced antigen retrieval.

Specification

Product Description	Rabbit polyclonal antibody raised against synthetic peptide of PTPRE.
Immunogen	A synthetic peptide corresponding to 18 amino acids at cytoplasmic domain of human PTPRE.
Host	Rabbit
Reactivity	Bovine, Chicken, Dog, Hamster, Horse, Human, Monkey, Bats
Specificity	BLAST analysis of the peptide immunogen showed no homology with other human proteins, except PTPRA (67%).
Form	Liquid

Purification	Immunoaffinity chromatography
Recommend Usage	Immunohistochemistry (Formalin/PFA-fixed paraffin-embedded sections) (3-6 ug/ml) The optimal working dilution should be determined by the end user.
Storage Buffer	In PBS (0.09% sodium azide)
Storage Instruction	Store at 4°C. For long term storage store at -80°C. Aliquot to avoid repeated freezing and thawing.
Note	This product contains sodium azide: a POISONOUS AND HAZARDOUS SUBSTANCE which should be handled by trained staff only.

Applications

- Immunohistochemistry (Formalin/PFA-fixed paraffin-embedded sections)

Immunohistochemistry (Formalin/PFA-fixed paraffin-embedded sections) of human spleen with PTPRE polyclonal antibody (Cat # PAB28343). Immunohistochemistry of formalin-fixed, paraffin-embedded tissue after heat-induced antigen retrieval.

- Immunohistochemistry (Formalin/PFA-fixed paraffin-embedded sections)

Immunohistochemistry (Formalin/PFA-fixed paraffin-embedded sections) of human testis with PTPRE polyclonal antibody (Cat # PAB28343). Immunohistochemistry of formalin-fixed, paraffin-embedded tissue after heat-induced antigen retrieval.

Gene Info — PTPRE

Entrez GeneID	5791
Protein Accession#	P23469
Gene Name	PTPRE
Gene Alias	DKFZp313F1310, FLJ57799, FLJ58245, HPTPE, PTPE, R-PTP-EPSILON
Gene Description	protein tyrosine phosphatase, receptor type, E
Omim ID	600926
Gene Ontology	Hyperlink

Gene Summary

The protein encoded by this gene is a member of the protein tyrosine phosphatase (PTP) family. PTPs are known to be signaling molecules that regulate a variety of cellular processes including cell growth, differentiation, mitotic cycle, and oncogenic transformation. Two alternatively spliced transcript variants of this gene have been reported, one of which encodes a receptor-type PTP that possesses a short extracellular domain, a single transmembrane region, and two tandem intracytoplasmic catalytic domains; Another one encodes a PTP that contains a distinct hydrophilic N-terminus, and thus represents a nonreceptor-type isoform of this PTP. Studies of the similar gene in mice suggested the regulatory roles of this PTP in RAS related signal transduction pathways, cytokines induced SATA signaling, as well as the activation of voltage-gated K⁺ channels. [provided by RefSeq]

Other Designations

OTTHUMP00000020735|OTTHUMP00000020736|protein tyrosine phosphatase epsilon|protein tyrosine phosphatase, receptor type, epsilon polypeptide

Disease

- [Alzheimer Disease](#)
- [Asthma](#)
- [Genetic Predisposition to Disease](#)
- [Hypersensitivity](#)
- [Tobacco Use Disorder](#)