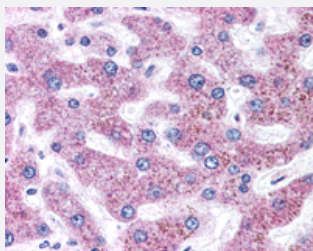


SLC5A11 polyclonal antibody

Catalog # PAB28333

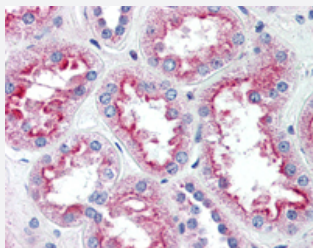
Size 50 ug

Applications



Immunohistochemistry (Formalin/PFA-fixed paraffin-embedded sections)

Immunohistochemistry (Formalin/PFA-fixed paraffin-embedded sections) of human liver with SLC5A11 polyclonal antibody (Cat # PAB28333).
Immunohistochemistry of formalin-fixed, paraffin-embedded tissue after heat-induced antigen retrieval.



Immunohistochemistry (Formalin/PFA-fixed paraffin-embedded sections)

Immunohistochemistry (Formalin/PFA-fixed paraffin-embedded sections) of human kidney with SLC5A11 polyclonal antibody (Cat # PAB28333).
Immunohistochemistry of formalin-fixed, paraffin-embedded tissue after heat-induced antigen retrieval.

Specification

Product Description	Rabbit polyclonal antibody raised against synthetic peptide of SLC5A11.
Immunogen	A synthetic peptide corresponding to 16 amino acids at internal region of human SLC5A11.
Host	Rabbit
Reactivity	Human, Monkey
Specificity	BLAST analysis of the peptide immunogen showed no homology with other human proteins.
Form	Liquid
Purification	Immunoaffinity chromatography

Recommend Usage	Immunohistochemistry (Formalin/PFA-fixed paraffin-embedded sections) (10 ug/ml) The optimal working dilution should be determined by the end user.
Storage Buffer	In PBS (0.09% sodium azide)
Storage Instruction	Store at 4°C. For long term storage store at -80°C. Aliquot to avoid repeated freezing and thawing.
Note	This product contains sodium azide: a POISONOUS AND HAZARDOUS SUBSTANCE which should be handled by trained staff only.

Applications

- Immunohistochemistry (Formalin/PFA-fixed paraffin-embedded sections)

Immunohistochemistry (Formalin/PFA-fixed paraffin-embedded sections) of human liver with SLC5A11 polyclonal antibody (Cat # PAB28333). Immunohistochemistry of formalin-fixed, paraffin-embedded tissue after heat-induced antigen retrieval.

- Immunohistochemistry (Formalin/PFA-fixed paraffin-embedded sections)

Immunohistochemistry (Formalin/PFA-fixed paraffin-embedded sections) of human kidney with SLC5A11 polyclonal antibody (Cat # PAB28333). Immunohistochemistry of formalin-fixed, paraffin-embedded tissue after heat-induced antigen retrieval.

Gene Info — SLC5A11

Entrez GeneID	115584
Protein Accession#	Q8WWX8
Gene Name	SLC5A11
Gene Alias	KST1, RKST1, SGLT6, SMT2
Gene Description	solute carrier family 5 (sodium/glucose cotransporter), member 11
Omim ID	610238
Gene Ontology	Hyperlink
Gene Summary	Cotransporters, such as SLC5A11, represent a major class of proteins that make use of ion gradients to drive active transport for the cellular accumulation of nutrients, neurotransmitters, osmolytes, and ions Roll et al. (2002) [PubMed 12039040].[supplied by OMIM]
Other Designations	homolog of rabbit KST1 putative sodium-coupled cotransporter RKST1 sodium/myo-inositol cotransporter 2

Disease

- [Lupus Erythematosus](#)
- [Tobacco Use Disorder](#)