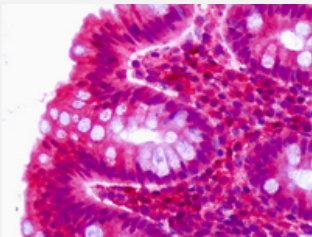


CELSR2 polyclonal antibody

Catalog # PAB28331

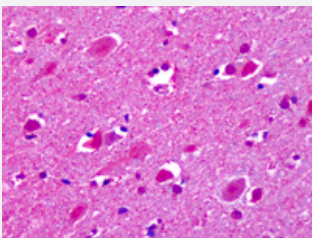
Size 50 ug

Applications



Immunohistochemistry (Formalin/PFA-fixed paraffin-embedded sections)

Immunohistochemistry (Formalin/PFA-fixed paraffin-embedded sections) of human colon epithelium with CELSR2 polyclonal antibody (Cat # PAB28331). Immunohistochemistry of formalin-fixed, paraffin-embedded tissue after heat-induced antigen retrieval.



Immunohistochemistry (Formalin/PFA-fixed paraffin-embedded sections)

Immunohistochemistry (Formalin/PFA-fixed paraffin-embedded sections) of human brain cortex neurons with CELSR2 polyclonal antibody (Cat # PAB28331). Immunohistochemistry of formalin-fixed, paraffin-embedded tissue after heat-induced antigen retrieval.

Specification

Product Description	Rabbit polyclonal antibody raised against synthetic peptide of CELSR2.
Immunogen	A synthetic peptide corresponding to 18 amino acids at C-terminus of human CELSR2.
Host	Rabbit
Reactivity	Bovine, Dog, Hamster, Horse, Human, Monkey, Mouse, Rabbit, Rat
Specificity	BLAST analysis of the peptide immunogen showed no homology with other human proteins.
Form	Liquid
Purification	Immunoaffinity chromatography

Recommend Usage	Immunohistochemistry (Formalin/PFA-fixed paraffin-embedded sections) (7 ug/ml) The optimal working dilution should be determined by the end user.
Storage Buffer	In PBS (0.09% sodium azide)
Storage Instruction	Store at 4°C. For long term storage store at -80°C. Aliquot to avoid repeated freezing and thawing.
Note	This product contains sodium azide: a POISONOUS AND HAZARDOUS SUBSTANCE which should be handled by trained staff only.

Applications

- Immunohistochemistry (Formalin/PFA-fixed paraffin-embedded sections)

Immunohistochemistry (Formalin/PFA-fixed paraffin-embedded sections) of human colon epithelium with CELSR2 polyclonal antibody (Cat # PAB28331). Immunohistochemistry of formalin-fixed, paraffin-embedded tissue after heat-induced antigen retrieval.

- Immunohistochemistry (Formalin/PFA-fixed paraffin-embedded sections)

Immunohistochemistry (Formalin/PFA-fixed paraffin-embedded sections) of human brain cortex neurons with CELSR2 polyclonal antibody (Cat # PAB28331). Immunohistochemistry of formalin-fixed, paraffin-embedded tissue after heat-induced antigen retrieval.

Gene Info — CELSR2

Entrez GeneID	1952
Protein Accession#	Q9HCU4
Gene Name	CELSR2
Gene Alias	CDHF10, EGFL2, FLJ34118, FLJ42737, FLJ45143, FLJ45845, Flamingo1, KIAA0279, MEGF3
Gene Description	cadherin, EGF LAG seven-pass G-type receptor 2 (flamingo homolog, Drosophila)
Omim ID	604265
Gene Ontology	Hyperlink

Gene Summary

The protein encoded by this gene is a member of the flamingo subfamily, part of the cadherin superfamily. The flamingo subfamily consists of nonclassic-type cadherins; a subpopulation that does not interact with catenins. The flamingo cadherins are located at the plasma membrane and have nine cadherin domains, seven epidermal growth factor-like repeats and two laminin A G-type repeats in their ectodomain. They also have seven transmembrane domains, a characteristic unique to this subfamily. It is postulated that these proteins are receptors involved in contact-mediated communication, with cadherin domains acting as homophilic binding regions and the EGF-like domains involved in cell adhesion and receptor-ligand interactions. The specific function of this particular member has not been determined. [provided by RefSeq]

Other Designations

EGF-like-domain, multiple 2|OTTHUMP00000013794|cadherin EGF LAG seven-pass G-type receptor 2|epidermal growth factor-like 2|multiple epidermal growth factor-like domains 3

Disease

- [Alzheimer Disease](#)
- [Cardiovascular Diseases](#)
- [Coronary Artery Disease](#)
- [Coronary Disease](#)
- [Dementia](#)
- [Diabetes Mellitus](#)
- [Dyslipidemias](#)
- [Edema](#)
- [Genetic Predisposition to Disease](#)
- [Lipid Metabolism Disorders](#)
- [Myocardial Infarction](#)