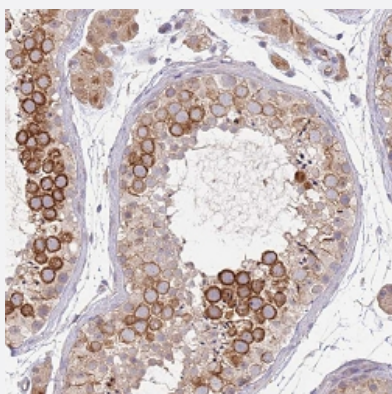


NMUR2 polyclonal antibody

Catalog # PAB28326 Size 100 uL

Applications



Immunohistochemistry (Formalin/PFA-fixed paraffin-embedded sections)

Immunohistochemical staining of human testis with NMUR2 polyclonal antibody (Cat # PAB28326) shows strong cytoplasmic positivity in cells in seminiferous ducts at 1:20 - 1:50 dilution.

Specification

Product Description	Rabbit polyclonal antibody raised against recombinant NMUR2.
Immunogen	Recombinant protein corresponding to amino acids of recombinant NMUR2.
Sequence	RFQAAFQNVISFHKQWHSQHDPQLPPAQRNIFLTECHFVELTEDIGPQQFPCQSSMHNSHLPTAL SSEQMSRTNYQSFHFN
Host	Rabbit
Reactivity	Human
Form	Liquid
Purification	Antigen affinity purification
Isotype	IgG
Recommend Usage	Immunohistochemistry (1:20-1:50) The optimal working dilution should be determined by the end user.
Storage Buffer	In PBS, pH 7.2 (40% glycerol, 0.02% sodium azide)

Storage Instruction

Store at 4°C. For long term storage store at -20°C.
Aliquot to avoid repeated freezing and thawing.

Note

This product contains sodium azide: a POISONOUS AND HAZARDOUS SUBSTANCE which should be handled by trained staff only.

Applications

- Immunohistochemistry (Formalin/PFA-fixed paraffin-embedded sections)

Immunohistochemical staining of human testis with NMUR2 polyclonal antibody (Cat # PAB28326) shows strong cytoplasmic positivity in cells in seminiferous ducts at 1:20 - 1:50 dilution.

Gene Info — NMUR2

Entrez GeneID [56923](#)

Protein Accession# [Q9GZQ4](#)

Gene Name NMUR2

Gene Alias FM-4, FM4, NMU-R2, NMU2R, TGR-1, TGR1

Gene Description neuromedin U receptor 2

Omim ID [605108](#)

Gene Ontology [Hyperlink](#)

Gene Summary This gene encodes a protein from the G-protein coupled receptor 1 family. This protein is a receptor for neuromedin U, which is a neuropeptide that is widely distributed in the gut and central nervous system. This receptor plays an important role in the regulation of food intake and body weight. [provided by RefSeq]

Other Designations G-protein coupled receptor TGR-1|growth hormone secretagogue receptor family, member 4

Pathway

- [Neuroactive ligand-receptor interaction](#)