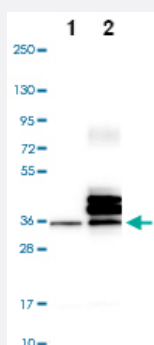


STC2 polyclonal antibody

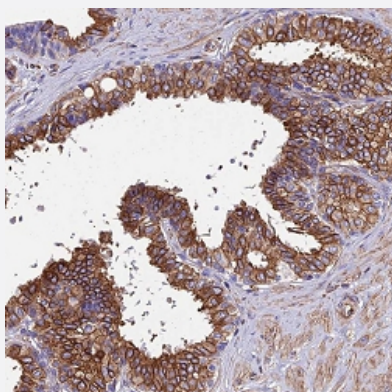
Catalog # PAB28313 Size 100 uL

Applications



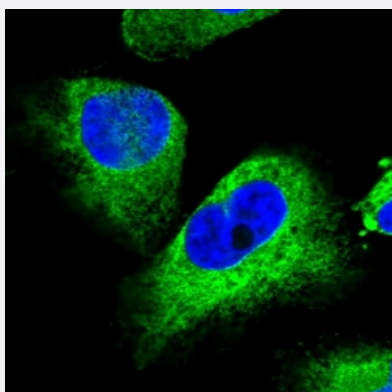
Western Blot (Transfected lysate)

Western blot analysis of Lane 1: Negative control (vector only transfected HEK293T lysate) Lane 2: Over-expression Lysate (Co-expressed with a C-terminal myc-DDK tag (~3.1 kDa) in mammalian HEK293T cells) with STC2 polyclonal antibody (Cat # PAB28313) at 1:100-1:250 dilution.



Immunohistochemistry (Formalin/PFA-fixed paraffin-embedded sections)

Immunohistochemical staining of human prostate with STC2 polyclonal antibody (Cat # PAB28313) shows strong cytoplasmic and membranous positivity in glandular cells at 1:500 - 1:1000 dilution.



Immunofluorescence

Immunofluorescent staining of human cell line U-251 MG with STC2 polyclonal antibody (Cat # PAB28313) at 1-4 ug/mL dilution shows positivity in endoplasmic reticulum.

Specification

| | |
|----------------------------|---|
| Product Description | Rabbit polyclonal antibody raised against recombinant STC2. |
| Immunogen | Recombinant protein corresponding to amino acids of recombinant STC2. |
| Sequence | SAIQKPPTAPPERQPQVDRTKLSRAHHGEAGHHLPEPSSRETGRGAKGERGSKSHPNHARGR VGGLGAQGPGSGSSEWEDEQSEYSDIRR |
| Host | Rabbit |
| Reactivity | Human |
| Form | Liquid |
| Purification | Antigen affinity purification |
| Isotype | IgG |
| Recommend Usage | Immunohistochemistry (1:500-1:1000) Western Blot (1:100-1:250) Immunofluorescence (1-4 ug/ml) The optimal working dilution should be determined by the end user. |
| Storage Buffer | In PBS, pH 7.2 (40% glycerol, 0.02% sodium azide) |
| Storage Instruction | Store at 4°C. For long term storage store at -20°C. Aliquot to avoid repeated freezing and thawing. |
| Note | This product contains sodium azide: a POISONOUS AND HAZARDOUS SUBSTANCE which should be handled by trained staff only. |

Applications

- Western Blot (Transfected lysate)

Western blot analysis of Lane 1: Negative control (vector only transfected HEK293T lysate) Lane 2: Over-expression Lysate (Co-expressed with a C-terminal myc-DDK tag (~3.1 kDa) in mammalian HEK293T cells) with STC2 polyclonal antibody (Cat # PAB28313) at 1:100-1:250 dilution.

- Immunohistochemistry (Formalin/PFA-fixed paraffin-embedded sections)

Immunohistochemical staining of human prostate with STC2 polyclonal antibody (Cat # PAB28313) shows strong cytoplasmic and membranous positivity in glandular cells at 1:500 - 1:1000 dilution.

- Immunofluorescence

Immunofluorescent staining of human cell line U-251 MG with STC2 polyclonal antibody (Cat # PAB28313) at 1-4 ug/mL dilution shows positivity in endoplasmic reticulum.

Gene Info — STC2

Entrez GeneID [8614](#)

Protein Accession# [O76061](#)

Gene Name STC2

Gene Alias STC-2, STCRP

Gene Description stanniocalcin 2

Omim ID [603665](#)

Gene Ontology [Hyperlink](#)

Gene Summary This gene encodes a secreted, homodimeric glycoprotein that is expressed in a wide variety of tissues and may have autocrine or paracrine functions. The encoded protein has 10 of its 15 cysteine residues conserved among stanniocalcin family members and is phosphorylated by casein kinase 2 exclusively on its serine residues. Its C-terminus contains a cluster of histidine residues which may interact with metal ions. The protein may play a role in the regulation of renal and intestinal calcium and phosphate transport, cell metabolism, or cellular calcium/phosphate homeostasis. Constitutive overexpression of human stanniocalcin 2 in mice resulted in pre- and postnatal growth restriction, reduced bone and skeletal muscle growth, and organomegaly. Expression of this gene is induced by estrogen and altered in some breast cancers. [provided by RefSeq]

Other Designations STC-related protein|stanniocalcin-related protein

Disease

- [Amyotrophic lateral sclerosis](#)
- [Anoxia](#)
- [Genetic Predisposition to Disease](#)
- [Hyperparathyroidism](#)