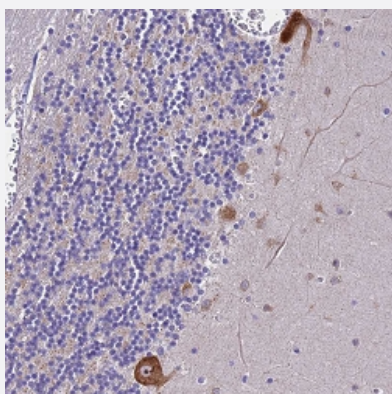


NAP1L6 polyclonal antibody

Catalog # PAB28294 Size 100 uL

Applications



Immunohistochemistry (Formalin/PFA-fixed paraffin-embedded sections)

Immunohistochemical staining of human cerebellum with NAP1L6 polyclonal antibody (Cat # PAB28294) shows strong cytoplasmic positivity in Purkinje cells at 1:50 - 1:200 dilution.

Specification

Product Description	Rabbit polyclonal antibody raised against recombinant NAP1L6.
Immunogen	Recombinant protein corresponding to amino acids of recombinant NAP1L6.
Sequence	MMEGLGEHSTAGEMGPLLGAVAATASPQSLMEYSSDADFIESLPLVVKYRVYTLKKLQAKCAVL EAKYLREFHSVE
Host	Rabbit
Reactivity	Human
Form	Liquid
Purification	Antigen affinity purification
Isotype	IgG
Recommend Usage	Immunohistochemistry (1:50-1:200) The optimal working dilution should be determined by the end user.
Storage Buffer	In PBS, pH 7.2 (40% glycerol, 0.02% sodium azide)

Storage Instruction

Store at 4°C. For long term storage store at -20°C.
Aliquot to avoid repeated freezing and thawing.

Note

This product contains sodium azide: a POISONOUS AND HAZARDOUS SUBSTANCE which should be handled by trained staff only.

Applications

- Immunohistochemistry (Formalin/PFA-fixed paraffin-embedded sections)

Immunohistochemical staining of human cerebellum with NAP1L6 polyclonal antibody (Cat # PAB28294) shows strong cytoplasmic positivity in Purkinje cells at 1:50 - 1:200 dilution.

Gene Info — NAP1L6

Entrez GeneID[645996](#)**Protein Accession#**[A6NFF2](#)**Gene Name**

NAP1L6

Gene Alias

FLJ33596

Gene Description

nucleosome assembly protein 1-like 6

Gene Ontology[Hyperlink](#)**Other Designations**

-