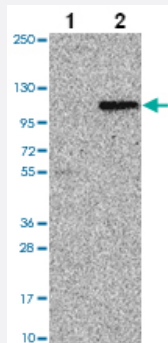


TUBGCP3 polyclonal antibody

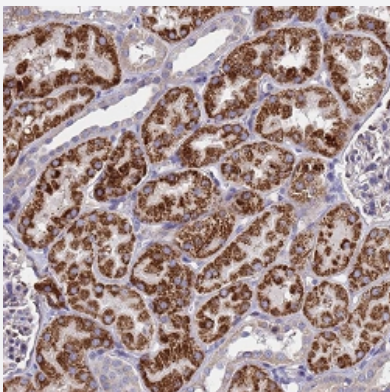
Catalog # PAB28274 Size 100 uL

Applications



Western Blot (Transfected lysate)

Western blot analysis of Lane 1: Negative control (vector only transfected HEK293T lysate) Lane 2: Over-expression Lysate (Co-expressed with a C-terminal myc-DDK tag (~3.1 kDa) in mammalian HEK293T cells) with TUBGCP3 polyclonal antibody (Cat # PAB28274).



Immunohistochemistry (Formalin/PFA-fixed paraffin-embedded sections)

Immunohistochemical staining of human kidney with TUBGCP3 polyclonal antibody (Cat # PAB28274) shows strong cytoplasmic positivity in cells in tubules.

Specification

Product Description	Rabbit polyclonal antibody raised against recombinant TUBGCP3.
Immunogen	Recombinant protein corresponding to amino acids of recombinant TUBGCP3.
Sequence	LLSVLHSQLQLEDDQGVNLGLESSLTLRLLVWYDPKIRLKTAAALVDHCQGRKGGELASAVHA YKTGDPYMRSLVQHILSLVSHPVLSFLYRWYDGELEDYHEFFVASDPTVKT
Host	Rabbit
Reactivity	Human

Form	Liquid
Purification	Antigen affinity purification
Isotype	IgG
Recommend Usage	Immunohistochemistry (1:50-1:200) Western Blot (1:100-1:250) The optimal working dilution should be determined by the end user.
Storage Buffer	In PBS, pH 7.2 (40% glycerol, 0.02% sodium azide)
Storage Instruction	Store at 4°C. For long term storage store at -20°C. Aliquot to avoid repeated freezing and thawing.
Note	This product contains sodium azide: a POISONOUS AND HAZARDOUS SUBSTANCE which should be handled by trained staff only.

Applications

- Western Blot (Transfected lysate)

Western blot analysis of Lane 1: Negative control (vector only transfected HEK293T lysate) Lane 2: Over-expression Lysate (Co-expressed with a C-terminal myc-DDK tag (~3.1 kDa) in mammalian HEK293T cells) with TUBGCP3 polyclonal antibody (Cat # PAB28274).

- Immunohistochemistry (Formalin/PFA-fixed paraffin-embedded sections)

Immunohistochemical staining of human kidney with TUBGCP3 polyclonal antibody (Cat # PAB28274) shows strong cytoplasmic positivity in cells in tubules.

Gene Info — TUBGCP3

Entrez GeneID	10426
Protein Accession#	Q96CW5
Gene Name	TUBGCP3
Gene Alias	GCP3, SPBC98, Spc98p
Gene Description	tubulin, gamma complex associated protein 3
Gene Ontology	Hyperlink
Gene Summary	O
Other Designations	OTTHUMP00000018726 spindle pole body protein

Disease

- [Tobacco Use Disorder](#)