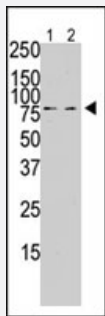


PLK2 polyclonal antibody

Catalog # PAB2827

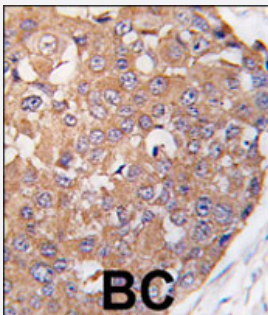
Size 400 uL

Applications



Western Blot

The PLK2 polyclonal antibody (Cat # PAB2827) is used in Western blot to detect PLK2 in PMA-treated Pam212 cell lysate (lane 1) and rat testis tissue lysate (lane 2) .



Immunohistochemistry (Formalin/PFA-fixed paraffin-embedded sections)

Formalin-fixed and paraffin-embedded human breast carcinoma tissue reacted with PLK2 polyclonal antibody (Cat # PAB2827) , which was peroxidase-conjugated to the secondary antibody, followed by DAB staining. This data demonstrates the use of this antibody for immunohistochemistry; clinical relevance has not been evaluated.

Specification

Product Description	Rabbit polyclonal antibody raised against synthetic peptide of PLK2.
Immunogen	A synthetic peptide (conjugated with KLH) corresponding to C-terminus of human PLK2.
Host	Rabbit
Reactivity	Human, Mouse, Rat
Form	Liquid
Purification	Protein G purification

Recommend Usage	Western Blot (1:1000) Immunohistochemistry (1:50-100) The optimal working dilution should be determined by the end user.
Storage Buffer	In PBS (0.09% sodium azide)
Storage Instruction	Store at 4°C. For long term storage store at -20°C. Aliquot to avoid repeated freezing and thawing.
Note	This product contains sodium azide: a POISONOUS AND HAZARDOUS SUBSTANCE which should be handled by trained staff only.

Applications

- Western Blot

The PLK2 polyclonal antibody (Cat # PAB2827) is used in Western blot to detect PLK2 in PMA-treated Pam212 cell lysate (lane 1) and rat testis tissue lysate (lane 2) .

- Immunohistochemistry (Formalin/PFA-fixed paraffin-embedded sections)

Formalin-fixed and paraffin-embedded human breast carcinoma tissue reacted with PLK2 polyclonal antibody (Cat # PAB2827) , which was peroxidase-conjugated to the secondary antibody, followed by DAB staining. This data demonstrates the use of this antibody for immunohistochemistry; clinical relevance has not been evaluated.

Gene Info — PLK2

Entrez GeneID	10769
Protein Accession#	NP_006613;Q9NYY3
Gene Name	PLK2
Gene Alias	SNK
Gene Description	polo-like kinase 2 (Drosophila)
Omim ID	607023
Gene Ontology	Hyperlink
Gene Summary	Serum-inducible kinase is a member of the 'polo' family of serine/threonine protein kinases that have a role in normal cell division.[supplied by OMIM]
Other Designations	polo-like kinase 2 serum-inducible kinase

Publication Reference

- [Wild type and P301L mutant Tau promote neuro-inflammation and \$\gamma\$ -Synuclein accumulation in lentiviral gene delivery models.](#)

Khandelwal PJ, Dumanis SB, Herman AM, Rebeck GW, Moussa CE.

Molecular and Cellular Neurosciences 2012 Jan; 49(1):44.

Application: WB-Ti, Rat, Rat brains

- [Generation and initial analysis of more than 15,000 full-length human and mouse cDNA sequences.](#)

Strausberg RL, Feingold EA, Grouse LH, Derge JG, Klausner RD, Collins FS, Wagner L, Shenmen CM, Schuler GD, Altschul SF, Zeeberg B, Buetow KH, Schaefer CF, Bhat NK, Hopkins RF, Jordan H, Moore T, Max SI, Wang J, Hsieh F, Diatchenko L, Marusina K, Farmer AA, Rubin GM, Hong L, Stapleton M, Soares MB, Bonaldo MF, Casavant TL, Scheetz TE, Brownstein MJ, Usdin TB, Toshiyuki S, Caminci P, Prange C, Raha SS, Loquellano NA, Peters GJ, Abramson RD, Mullahy SJ, Bosak SA, McEwan PJ, McKernan KJ, Malek JA,

PNAS 2002 Dec; 99(26):16899.

- [Identification of the human homologue of the early-growth response gene Snk, encoding a serum-inducible kinase.](#)

Liby K, Wu H, Ouyang B, Wu S, Chen J, Dai W.

DNA Sequence 2001 Dec; 11(6):527.

Disease

- [Adenocarcinoma](#)
- [Genetic Predisposition to Disease](#)
- [Pancreatic Neoplasms](#)