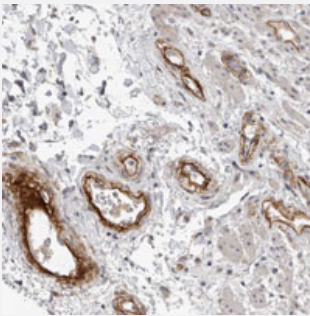


C1orf216 polyclonal antibody

Catalog # PAB28269 Size 100 uL

Applications



Immunohistochemistry (Formalin/PFA-fixed paraffin-embedded sections)

Immunohistochemical staining of human rectum with C1orf216 polyclonal antibody (Cat # PAB28269) shows strong positivity in endothelial cells at 1:10-1:20 dilution.

Specification

Product Description	Rabbit polyclonal antibody raised against recombinant C1orf216.
Immunogen	Recombinant protein corresponding to amino acids of recombinant C1orf216.
Sequence	MFAIQPGLAEGGQFLGDPPPGLCQPELQPDSNSNFMASAKDANENWHGMPGRVEPILRRSSSE SPSDNQA
Host	Rabbit
Reactivity	Human
Form	Liquid
Purification	Antigen affinity purification
Isotype	IgG
Recommend Usage	Immunohistochemistry (1:20-1:50) The optimal working dilution should be determined by the end user.
Storage Buffer	In PBS, pH 7.2 (40% glycerol, 0.02% sodium azide)

Storage Instruction

Store at 4°C. For long term storage store at -20°C.
Aliquot to avoid repeated freezing and thawing.

Note

This product contains sodium azide: a POISONOUS AND HAZARDOUS SUBSTANCE which should be handled by trained staff only.

Applications

- Immunohistochemistry (Formalin/PFA-fixed paraffin-embedded sections)

Immunohistochemical staining of human rectum with C1orf216 polyclonal antibody (Cat # PAB28269) shows strong positivity in endothelial cells at 1:10-1:20 dilution.

Gene Info — C1orf216

Entrez GeneID[127703](#)**Gene Name**

C1orf216

Gene Alias

FLJ38984

Gene Description

chromosome 1 open reading frame 216

Gene Ontology[Hyperlink](#)**Other Designations**

hypothetical protein LOC127703