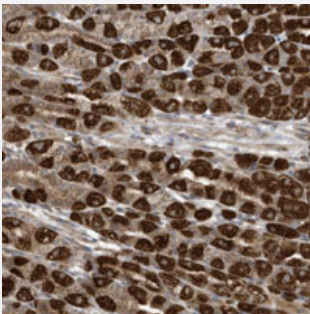


## C2orf74 polyclonal antibody

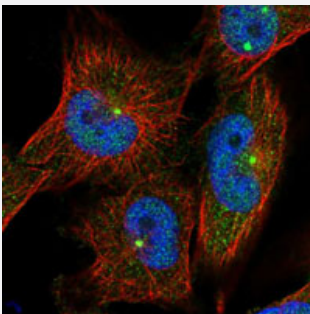
Catalog # PAB28262      Size 100 uL

### Applications



#### Immunohistochemistry (Formalin/PFA-fixed paraffin-embedded sections)

Immunohistochemical staining of human stomach with C2orf74 polyclonal antibody (Cat # PAB28262) shows strong cytoplasmic positivity in parietal cells.



#### Immunofluorescence

Immunofluorescent staining of human cell line U-251MG with C2orf74 polyclonal antibody (Cat # PAB28262) at 1-4 ug/ml shows positivity in nucleus but not nucleoli & centrosome.

### Specification

Product Description	Rabbit polyclonal antibody raised against recombinant C2orf74.
Immunogen	Recombinant protein corresponding to amino acids of recombinant C2orf74.
Sequence	DANGGVDCAAAKVVTSNPEDHERILMQVMNLNVPMPRGILVQRQSKEVLATPLENRRDMEAEENQINEKQEPENAGETGQEEDDGLQKIHTSVTRTPSVVESQKRPLKGVTFSSREVIVDLGNEYPTPRSYT
Host	Rabbit
Reactivity	Human
Form	Liquid

<b>Purification</b>	Antigen affinity purification
<b>Isotype</b>	IgG
<b>Recommend Usage</b>	Immunofluorescence (1-4 ug/ml) Immunohistochemistry (1:50-1:200) The optimal working dilution should be determined by the end user.
<b>Storage Buffer</b>	In PBS, pH 7.2 (40% glycerol, 0.02% sodium azide)
<b>Storage Instruction</b>	Store at 4°C. For long term storage store at -20°C. Aliquot to avoid repeated freezing and thawing.
<b>Note</b>	This product contains sodium azide: a POISONOUS AND HAZARDOUS SUBSTANCE which should be handled by trained staff only.

## Applications

- Immunohistochemistry (Formalin/PFA-fixed paraffin-embedded sections)

Immunohistochemical staining of human stomach with C2orf74 polyclonal antibody (Cat # PAB28262) shows strong cytoplasmic positivity in parietal cells.

- Immunofluorescence

Immunofluorescent staining of human cell line U-251MG with C2orf74 polyclonal antibody (Cat # PAB28262) at 1-4 ug/ml shows positivity in nucleus but not nucleoli & centrosome.

## Gene Info — C2orf74

<b>Entrez GeneID</b>	<a href="#">339804</a>
<b>Gene Name</b>	C2orf74
<b>Gene Alias</b>	-
<b>Gene Description</b>	chromosome 2 open reading frame 74
<b>Gene Ontology</b>	<a href="#">Hyperlink</a>
<b>Other Designations</b>	hypothetical protein LOC339804