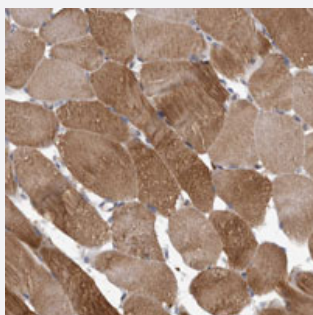


# LOC100130988 polyclonal antibody

Catalog # PAB28260      Size 100 uL

## Applications



### Immunohistochemistry (Formalin/PFA-fixed paraffin-embedded sections)

Immunohistochemical staining of human skeletal muscle with LOC100130988 polyclonal antibody (Cat # PAB28260) shows moderate cytoplasmic positivity at 1:10-1:20 dilution.

## Specification

Product Description	Rabbit polyclonal antibody raised against recombinant LOC100130988.
Immunogen	Recombinant protein corresponding to amino acids of recombinant LOC100130988.
Sequence	ANIPGYTGKVVHFTATHPANSNIPSTTPSPDSELHRVFQKEMAVDLFRHQAPLSRLVTTVRPYNPFNKKDKETIDY
Host	Rabbit
Reactivity	Human
Form	Liquid
Purification	Antigen affinity purification
Isotype	IgG
Recommend Usage	Immunohistochemistry (1:20-1:50) The optimal working dilution should be determined by the end user.
Storage Buffer	In PBS, pH 7.2 (40% glycerol, 0.02% sodium azide)

**Storage Instruction**

Store at 4°C. For long term storage store at -20°C.  
Aliquot to avoid repeated freezing and thawing.

**Note**

This product contains sodium azide: a POISONOUS AND HAZARDOUS SUBSTANCE which should be handled by trained staff only.

## Applications

- Immunohistochemistry (Formalin/PFA-fixed paraffin-embedded sections)

Immunohistochemical staining of human skeletal muscle with LOC100130988 polyclonal antibody (Cat # PAB28260) shows moderate cytoplasmic positivity at 1:10-1:20 dilution.

## Gene Info — LOC100130988

**Entrez GeneID** [100130988](#)

**Protein Accession#** [A4D263](#)

**Gene Name** LOC100130988

**Gene Alias** -

**Gene Description** hypothetical protein LOC100130988

**Gene Ontology** [Hyperlink](#)

**Other Designations** -

## Disease

- [Tobacco Use Disorder](#)