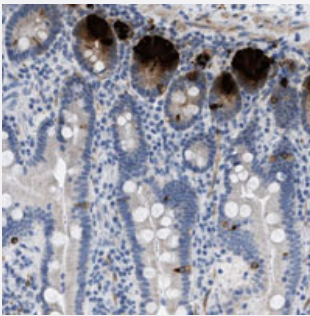


# C3orf63 polyclonal antibody

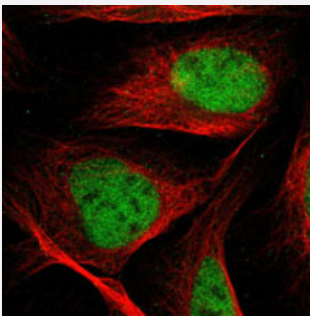
Catalog # PAB28235      Size 100 uL

## Applications



### Immunohistochemistry (Formalin/PFA-fixed paraffin-embedded sections)

Immunohistochemical staining of human duodenum with C3orf63 polyclonal antibody (Cat # PAB28235) shows strong positivity in Paneth and enteroendocrine cells.



### Immunofluorescence

Immunofluorescent staining of human cell line U-2 OS with C3orf63 polyclonal antibody (Cat # PAB28235) at 1-4 ug/ml shows positivity in nuclei but not nucleoli.

## Specification

Product Description	Rabbit polyclonal antibody raised against recombinant C3orf63.
Immunogen	Recombinant protein corresponding to amino acids of recombinant C3orf63.
Sequence	GKWQWKVHCKFQKKLKELGRLNAKALSLTLLNVYQKKHLVEILSYHNCDSQTRNAPELDCILRLQAQNIQQRHIVFLTEKNIKMLSSYTDNGIVATAEDFMQNFKNLVGYHNSITEENLPQLGANENLES
Host	Rabbit
Reactivity	Human
Form	Liquid

<b>Purification</b>	Antigen affinity purification
<b>Isotype</b>	IgG
<b>Recommend Usage</b>	Immunofluorescence (1-4 ug/ml) Immunohistochemistry (1:50-1:200) The optimal working dilution should be determined by the end user.
<b>Storage Buffer</b>	In PBS, pH 7.2 (40% glycerol, 0.02% sodium azide)
<b>Storage Instruction</b>	Store at 4°C. For long term storage store at -20°C. Aliquot to avoid repeated freezing and thawing.
<b>Note</b>	This product contains sodium azide: a POISONOUS AND HAZARDOUS SUBSTANCE which should be handled by trained staff only.

## Applications

- Immunohistochemistry (Formalin/PFA-fixed paraffin-embedded sections)

Immunohistochemical staining of human duodenum with C3orf63 polyclonal antibody (Cat # PAB28235) shows strong positivity in Paneth and enteroendocrine cells.

- Immunofluorescence

Immunofluorescent staining of human cell line U-2 OS with C3orf63 polyclonal antibody (Cat # PAB28235) at 1-4 ug/ml shows positivity in nuclei but not nucleoli.

## Gene Info — C3orf63

<b>Entrez GeneID</b>	<a href="#">23272</a>
<b>Gene Name</b>	C3orf63
<b>Gene Alias</b>	DKFZp686C2456, KIAA1105, RAP140, se89-1
<b>Gene Description</b>	chromosome 3 open reading frame 63
<b>Gene Ontology</b>	<a href="#">Hyperlink</a>
<b>Other Designations</b>	CTCL tumor antigen se89-1 retinoblastoma-associated protein 140

## Disease

- [Tobacco Use Disorder](#)