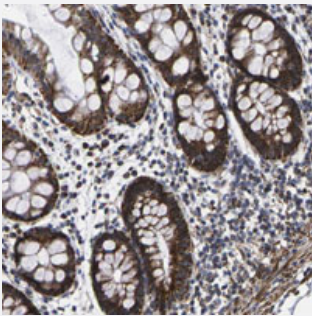


P2RY11 polyclonal antibody

Catalog # PAB28230 Size 100 uL

Applications



Immunohistochemistry (Formalin/PFA-fixed paraffin-embedded sections)

Immunohistochemical staining of human rectum.

Specification

Product Description	Rabbit polyclonal antibody raised against recombinant P2RY11.
Immunogen	Recombinant protein corresponding to amino acids of human P2RY11.
Sequence	VLNVDARRRWSTRCP SFADIAQATAALELGPYVGYQVMRGLMPLAFCVHPLL YMAAVPSLGCCC RHCPGYRDSWNPEDAKSTGQALPLNATAAPKPSEPQSRELSQ
Host	Rabbit
Reactivity	Human
Form	Liquid
Purification	Antigen affinity purification
Isotype	IgG
Recommend Usage	Immunohistochemistry (1:50-1:200) The optimal working dilution should be determined by the end user.
Storage Buffer	In PBS, pH 7.2 (40% glycerol, 0.02% sodium azide)

Storage Instruction

Store at 4°C. For long term storage store at -20°C.
Aliquot to avoid repeated freezing and thawing.

Note

This product contains sodium azide: a POISONOUS AND HAZARDOUS SUBSTANCE which should be handled by trained staff only.

Applications

- Immunohistochemistry (Formalin/PFA-fixed paraffin-embedded sections)

Immunohistochemical staining of human rectum.

Gene Info — P2RY11

Entrez GeneID[5032](#)**Protein Accession#**[Q96G91](#)**Gene Name**

P2RY11

Gene Alias

P2Y11

Gene Description

purinergic receptor P2Y, G-protein coupled, 11

Omim ID[602697](#)**Gene Ontology**[Hyperlink](#)**Gene Summary**

The product of this gene belongs to the family of G-protein coupled receptors. This family has several receptor subtypes with different pharmacological selectivity, which overlaps in some cases, for various adenosine and uridine nucleotides. This receptor is coupled to the stimulation of the phosphoinositide and adenylyl cyclase pathways and behaves as a selective purinoceptor. Naturally occurring read-through transcripts, resulting from intergenic splicing between this gene and an immediately upstream gene (PPAN, encoding pater pan homolog), have been found. The PPAN-P2RY11 read-through mRNA is ubiquitously expressed and encodes a fusion protein that shares identity with each individual gene product. [provided by RefSeq]

Other Designations

P2Y purinoceptor 11|P2Y11 receptor|purinergic receptor P2Y11

Pathway

- [Neuroactive ligand-receptor interaction](#)

Disease

- [Myocardial Infarction](#)