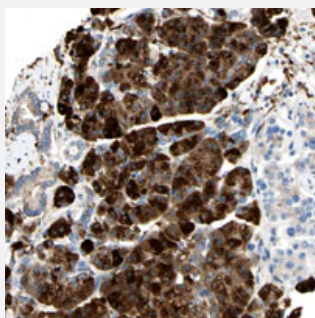


NCBP2L polyclonal antibody

Catalog # PAB28226 Size 100 uL

Applications



Immunohistochemistry (Formalin/PFA-fixed paraffin-embedded sections)

Immunohistochemical staining of human pancreas with NCBP2L polyclonal antibody (Cat # PAB28226) shows strong cytoplasmic positivity in exocrine glandular cells at 1:200-1:500 dilution.

Specification

Product Description	Rabbit polyclonal antibody raised against recombinant NCBP2L.
Immunogen	Recombinant protein corresponding to amino acids of recombinant NCBP2L.
Sequence	RDHQFSGRKFFQKEKLLKESSTLNMGNLSFYTTEEKIHELFSRSDIRNIFMGLDKIKKTACGFCFVE CHNRADAENAMRFLTGTCLEWICTDWDVGFREGQQ
Host	Rabbit
Reactivity	Human
Form	Liquid
Purification	Antigen affinity purification
Isotype	IgG
Recommend Usage	Immunohistochemistry (1:200-1:500) The optimal working dilution should be determined by the end user.
Storage Buffer	In PBS, pH 7.2 (40% glycerol, 0.02% sodium azide)

Storage Instruction

Store at 4°C. For long term storage store at -20°C.
Aliquot to avoid repeated freezing and thawing.

Note

This product contains sodium azide: a POISONOUS AND HAZARDOUS SUBSTANCE which should be handled by trained staff only.

Applications

- Immunohistochemistry (Formalin/PFA-fixed paraffin-embedded sections)

Immunohistochemical staining of human pancreas with NCBP2L polyclonal antibody (Cat # PAB28226) shows strong cytoplasmic positivity in exocrine glandular cells at 1:200-1:500 dilution.

Gene Info — NCBP2L

Entrez GeneID[392517](#)**Protein Accession#**[A6PVI3](#)**Gene Name**

NCBP2L

Gene Alias

dJ820B18.1

Gene Description

nuclear cap binding protein subunit 2-like

Gene Ontology[Hyperlink](#)**Other Designations**

-