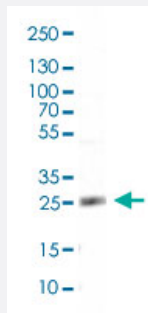


TMED7 polyclonal antibody

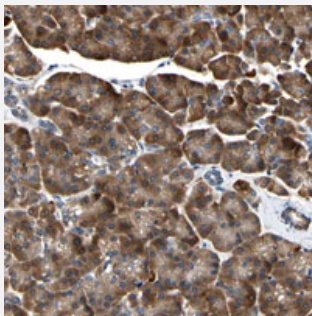
Catalog # PAB28224 Size 100 uL

Applications



Western Blot (Cell lysate)

Western blot analysis in CAPAN-2 cell lysate.



Immunohistochemistry (Formalin/PFA-fixed paraffin-embedded sections)

Immunohistochemical staining of human pancreas.

Specification

Product Description	Rabbit polyclonal antibody raised against recombinant TMED7.
Immunogen	Recombinant protein corresponding to amino acids of human TMED7.
Sequence	ITFELPDNAKQCFYEDIAQGKTCTLEFQVITGGHYDVDCRLEDPDGKVLKEMKKQYDSFTFTASK NGTYKFCFSNEFSTF
Host	Rabbit
Reactivity	Human
Form	Liquid

Purification	Antigen affinity purification
Isotype	IgG
Recommend Usage	Western Blot (0.04-0.4 ug/mL) Immunohistochemistry (1:50-1:200) The optimal working dilution should be determined by the end user.
Storage Buffer	In PBS, pH 7.2 (40% glycerol, 0.02% sodium azide)
Storage Instruction	Store at 4°C. For long term storage store at -20°C. Aliquot to avoid repeated freezing and thawing.
Note	This product contains sodium azide: a POISONOUS AND HAZARDOUS SUBSTANCE which should be handled by trained staff only.

Applications

- Western Blot (Cell lysate)

Western blot analysis in CAPAN-2 cell lysate.

- Immunohistochemistry (Formalin/PFA-fixed paraffin-embedded sections)

Immunohistochemical staining of human pancreas.

Gene Info — TMED7

Entrez GeneID	51014
Protein Accession#	Q9Y3B3
Gene Name	TMED7
Gene Alias	CGI-109, FLJ90481
Gene Description	transmembrane emp24 protein transport domain containing 7
Gene Ontology	Hyperlink
Other Designations	-