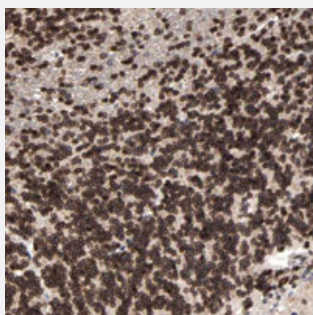


C14orf38 polyclonal antibody

Catalog # PAB28215 Size 100 uL

Applications



Immunohistochemistry (Formalin/PFA-fixed paraffin-embedded sections)

Immunohistochemical staining of human cerebellum with C14orf38 polyclonal antibody (Cat # PAB28215) shows strong nuclear membranous positivity in cells of granular layer.

Specification

Product Description	Rabbit polyclonal antibody raised against recombinant C14orf38.
Immunogen	Recombinant protein corresponding to amino acids of recombinant C14orf38.
Sequence	AGEKLVQAAAVSTGPSLELCTLPSTLGSSVAVEALEQLFVVEQSLQSDYFKCNEEAKIFLKDIAVA VKKLEEMRKATIDLLEIESMELNKLYLLETLPNSIKRELEECVRDARRLNLFINTIKMRITRTENEIE LL
Host	Rabbit
Reactivity	Human
Form	Liquid
Purification	Antigen affinity purification
Isotype	IgG
Recommend Usage	Immunohistochemistry (1:200-1:500) The optimal working dilution should be determined by the end user.
Storage Buffer	In PBS, pH 7.2 (40% glycerol, 0.02% sodium azide)

Storage Instruction

Store at 4°C. For long term storage store at -20°C.
Aliquot to avoid repeated freezing and thawing.

Note

This product contains sodium azide: a POISONOUS AND HAZARDOUS SUBSTANCE which should be handled by trained staff only.

Applications

- Immunohistochemistry (Formalin/PFA-fixed paraffin-embedded sections)

Immunohistochemical staining of human cerebellum with C14orf38 polyclonal antibody (Cat # PAB28215) shows strong nuclear membranous positivity in cells of granular layer.

Gene Info — C14orf38

Entrez GeneID[729665](#)**Gene Name**

C14orf38

Gene Alias

c14_5395

Gene Description

chromosome 14 open reading frame 38

Gene Ontology[Hyperlink](#)**Other Designations**

-