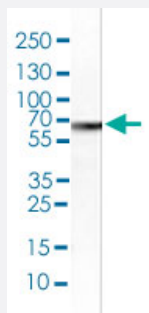


# WASHC1 polyclonal antibody

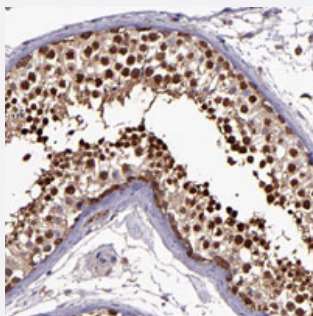
Catalog # PAB28212      Size 100 uL

## Applications



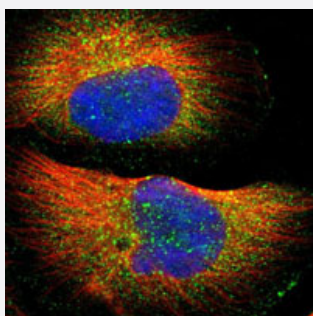
### Western Blot (Tissue lysate)

Western blot analysis of human testis.



### Immunohistochemistry (Formalin/PFA-fixed paraffin-embedded sections)

Immunohistochemical staining of human testis.



### Immunofluorescence

Immunofluorescent staining of U-251MG cells.

## Specification

### Product Description

Rabbit polyclonal antibody raised against recombinant WASHC1.

### Immunogen

Recombinant protein corresponding to amino acids of human WASHC1.

<b>Sequence</b>	GAPREVVDPSGGWATLLESIRQAGGIGKAKLRSMKERKLEKKKQKEQEQVRATSQGGHLSMDL FNKLVMRHKGISGKGPGAGEGPGGAFARVSDSIPPLPPPQQPQVDEDEDDWES
<b>Host</b>	Rabbit
<b>Reactivity</b>	Human
<b>Form</b>	Liquid
<b>Purification</b>	Antigen affinity purification
<b>Isotype</b>	IgG
<b>Recommend Usage</b>	Western Blot (0.04-0.4 ug/mL) Immunofluorescence (0.25-2 ug/mL) Immunohistochemistry (1:1000-1:2500) The optimal working dilution should be determined by the end user.
<b>Storage Buffer</b>	In PBS, pH 7.2 (40% glycerol, 0.02% sodium azide).
<b>Storage Instruction</b>	Store at 4°C. For long term storage store at -20°C. Aliquot to avoid repeated freezing and thawing.
<b>Note</b>	This product contains sodium azide: a POISONOUS AND HAZARDOUS SUBSTANCE which should be handled by trained staff only.

## Applications

- Western Blot (Tissue lysate)

Western blot analysis of human testis.

- Immunohistochemistry (Formalin/PFA-fixed paraffin-embedded sections)

Immunohistochemical staining of human testis.

- Immunofluorescence

Immunofluorescent staining of U-251MG cells.