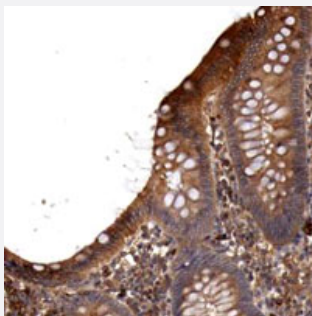


# LOC100131755 polyclonal antibody

Catalog # PAB28211      Size 100 uL

## Applications



### Immunohistochemistry (Formalin/PFA-fixed paraffin-embedded sections)

Immunohistochemical staining of human appendix with LOC100131755 polyclonal antibody (Cat # PAB28211) shows cytoplasmic positivity in glandular cells at 1:20-1:50 dilution.

## Specification

<b>Product Description</b>	Rabbit polyclonal antibody raised against recombinant LOC100131755.
<b>Immunogen</b>	Recombinant protein corresponding to amino acids of recombinant LOC100131755.
<b>Sequence</b>	GRAQSVRTLARNGSTVKMETVVGVSQTLAINEAEIKTKPQVEIGAETGARSGPRAEVETKATAIAI HRANSQAKAMVGAEPETQSESKVVAGTLVMTEAVTLTEVKAKAREVAMKEAVTQTDAEAGKIVK KEAVTQTKA
<b>Host</b>	Rabbit
<b>Reactivity</b>	Human
<b>Form</b>	Liquid
<b>Purification</b>	Antigen affinity purification
<b>Isotype</b>	IgG
<b>Recommend Usage</b>	Immunohistochemistry (1:20-1:50) The optimal working dilution should be determined by the end user.
<b>Storage Buffer</b>	In PBS, pH 7.2 (40% glycerol, 0.02% sodium azide)

**Storage Instruction**

Store at 4°C. For long term storage store at -20°C.  
Aliquot to avoid repeated freezing and thawing.

**Note**

This product contains sodium azide: a POISONOUS AND HAZARDOUS SUBSTANCE which should be handled by trained staff only.

## Applications

- Immunohistochemistry (Formalin/PFA-fixed paraffin-embedded sections)

Immunohistochemical staining of human appendix with LOC100131755 polyclonal antibody (Cat # PAB28211) shows cytoplasmic positivity in glandular cells at 1:20-1:50 dilution.

## Gene Info — LOC100131755

**Entrez GeneID**[100131755](#)**Protein Accession#**[F8W8Y7](#)**Gene Name**

LOC100131755

**Gene Alias**

-

**Gene Description**

similar to hCG1792883

**Gene Ontology**[Hyperlink](#)**Other Designations**

-