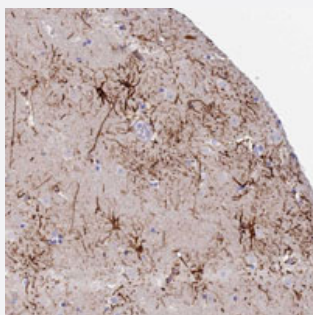


# STK25 polyclonal antibody

Catalog # PAB28208

Size 100 uL

## Applications



### Immunohistochemistry (Formalin/PFA-fixed paraffin-embedded sections)

Immunohistochemical staining of human lateral ventricle wall with STK25 polyclonal antibody (Cat # PAB28208) shows strong cytoplasmic positivity in astrocytes at 1:50-1:200 dilution.

## Specification

<b>Product Description</b>	Rabbit polyclonal antibody raised against recombinant STK25.
<b>Immunogen</b>	Recombinant protein corresponding to amino acids of recombinant STK25.
<b>Sequence</b>	PGISDKLMVHLVERVQRFSHNRNHLTSTR
<b>Host</b>	Rabbit
<b>Reactivity</b>	Human
<b>Form</b>	Liquid
<b>Purification</b>	Antigen affinity purification
<b>Isotype</b>	IgG
<b>Recommend Usage</b>	Immunohistochemistry (1:50-1:200) The optimal working dilution should be determined by the end user.
<b>Storage Buffer</b>	In PBS, pH 7.2 (40% glycerol, 0.02% sodium azide)
<b>Storage Instruction</b>	Store at 4°C. For long term storage store at -20°C. Aliquot to avoid repeated freezing and thawing.

**Note**

This product contains sodium azide: a POISONOUS AND HAZARDOUS SUBSTANCE which should be handled by trained staff only.

## Applications

- Immunohistochemistry (Formalin/PFA-fixed paraffin-embedded sections)

Immunohistochemical staining of human lateral ventricle wall with STK25 polyclonal antibody (Cat # PAB28208) shows strong cytoplasmic positivity in astrocytes at 1:50-1:200 dilution.

## Gene Info — STK25

**Entrez GeneID** [10494](#)

**Protein Accession#** [O00506](#)

**Gene Name** STK25

**Gene Alias** DKFZp686J1430, SOK1, YSK1

**Gene Description** serine/threonine kinase 25 (STE20 homolog, yeast)

**Omim ID** [602255](#)

**Gene Ontology** [Hyperlink](#)

**Gene Summary** O

**Other Designations** Ste20, yeast homolog|serine/threonine kinase 25|serine/threonine kinase 25 (Ste20, yeast homolog)|sterile 20 (oxidant stress response kinase 1; yeast Sps1/Ste20-related kinase 1)