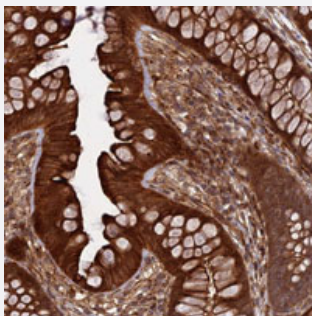


PHLDB3 polyclonal antibody

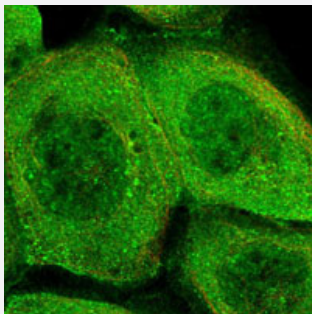
Catalog # PAB28197 Size 100 uL

Applications



Immunohistochemistry (Formalin/PFA-fixed paraffin-embedded sections)

Immunohistochemical staining of human colon with PHLDB3 polyclonal antibody (Cat # PAB28197) shows strong cytoplasmic and membranous positivity in glandular cells.



Immunofluorescence

Immunofluorescent staining of human cell line A-431 with PHLDB3 polyclonal antibody (Cat # PAB28197) at 1-4 ug/mL dilution shows positivity in nucleus but not nucleoli, plasma membrane & cytoplasm.

Specification

Product Description	Rabbit polyclonal antibody raised against recombinant PHLDB3.
Immunogen	Recombinant protein corresponding to amino acids of recombinant PHLDB3.
Sequence	RQQREQEQRRLSQERDRLEGLRQRLRKAQGQLDSQPEDQQRERLLQGVQEMREQLDVAQRAYE DLEFQ
Host	Rabbit
Reactivity	Human
Form	Liquid

Purification	Antigen affinity purification
Isotype	IgG
Recommend Usage	Immunohistochemistry (1:200-1:500) Immunofluorescence (1-4 ug/mL) The optimal working dilution should be determined by the end user.
Storage Buffer	In PBS, pH 7.2 (40% glycerol, 0.02% sodium azide)
Storage Instruction	Store at 4°C. For long term storage store at -20°C. Aliquot to avoid repeated freezing and thawing.
Note	This product contains sodium azide: a POISONOUS AND HAZARDOUS SUBSTANCE which should be handled by trained staff only.

Applications

- Immunohistochemistry (Formalin/PFA-fixed paraffin-embedded sections)

Immunohistochemical staining of human colon with PHLDB3 polyclonal antibody (Cat # PAB28197) shows strong cytoplasmic and membranous positivity in glandular cells.

- Immunofluorescence

Immunofluorescent staining of human cell line A-431 with PHLDB3 polyclonal antibody (Cat # PAB28197) at 1-4 ug/mL dilution shows positivity in nucleus but not nucleoli, plasma membrane & cytoplasm.

Gene Info — PHLDB3

Entrez GeneID	653583
Gene Name	PHLDB3
Gene Alias	FLJ40193, MGC87511
Gene Description	pleckstrin homology-like domain, family B, member 3
Gene Ontology	Hyperlink
Gene Summary	family B
Other Designations	-