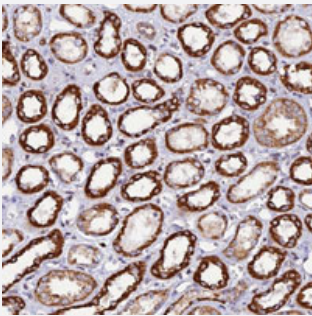


C19orf24 polyclonal antibody

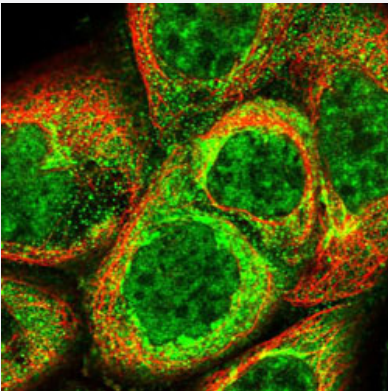
Catalog # PAB28196 Size 100 uL

Applications



Immunohistochemistry (Formalin/PFA-fixed paraffin-embedded sections)

Immunohistochemical staining of human kidney.



Immunofluorescence

Immunofluorescent staining of A-431 cells.

Specification

| | |
|---------------------|---|
| Product Description | Rabbit polyclonal antibody raised against recombinant C19orf24. |
| Immunogen | Recombinant protein corresponding to amino acids of human C19orf24. |
| Sequence | AFRLKKPQRRRYGLLANTEDPTEMASLDSDEETVFESRNL |
| Host | Rabbit |
| Reactivity | Human |
| Form | Liquid |

| | |
|---------------------|---|
| Purification | Antigen affinity purification |
| Isotype | IgG |
| Recommend Usage | Immunohistochemistry (1:200-1:500) Immunofluorescence (0.25-2 ug/mL) The optimal working dilution should be determined by the end user. |
| Storage Buffer | In PBS, pH 7.2 (40% glycerol, 0.02% sodium azide) |
| Storage Instruction | Store at 4°C. For long term storage store at -20°C. Aliquot to avoid repeated freezing and thawing. |
| Note | This product contains sodium azide: a POISONOUS AND HAZARDOUS SUBSTANCE which should be handled by trained staff only. |

Applications

- Immunohistochemistry (Formalin/PFA-fixed paraffin-embedded sections)
Immunohistochemical staining of human kidney.
- Immunofluorescence
Immunofluorescent staining of A-431 cells.

Gene Info — C19orf24

| | |
|--------------------|-------------------------------------|
| Entrez GeneID | 55009 |
| Protein Accession# | Q9BVV8 |
| Gene Name | C19orf24 |
| Gene Alias | FLJ20640 |
| Gene Description | chromosome 19 open reading frame 24 |
| Gene Ontology | Hyperlink |
| Other Designations | hypothetical protein LOC55009 |