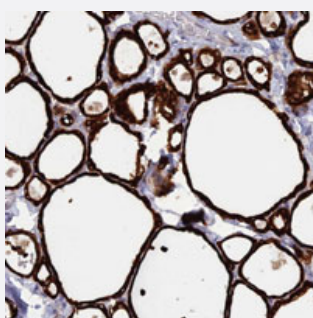


# WDR46 polyclonal antibody

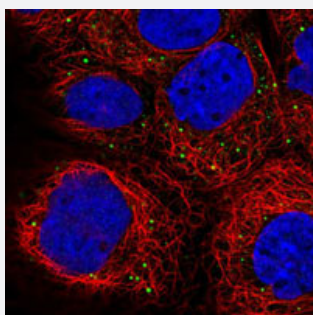
Catalog # PAB28194      Size 100 uL

## Applications



### Immunohistochemistry (Formalin/PFA-fixed paraffin-embedded sections)

Immunohistochemical staining of human thyroid with WDR46 polyclonal antibody (Cat # PAB28194) shows strong cytoplasmic positivity in glandular cells.



### Immunofluorescence

Immunofluorescent staining of human cell line A-431 with WDR46 polyclonal antibody (Cat # PAB28194) at 1-4 ug/mL dilution shows positivity in vesicles.

## Specification

Product Description	Rabbit polyclonal antibody raised against recombinant WDR46.
Immunogen	Recombinant protein corresponding to amino acids of recombinant WDR46.
Sequence	LDWVTKKLMCEINVMEAVRDIRFLHSEALLAVAQNRWLHIYDNQGIELHCIRRCDRVTRLEFLPFHFLLATASETGFLTYLDVSVGKIVAALNARAGRLDVM SQNPYNAVIHL
Host	Rabbit
Reactivity	Human
Form	Liquid

Purification	Antigen affinity purification
Isotype	IgG
Recommend Usage	Immunohistochemistry (1:20-1:50) Immunofluorescence (1-4 ug/mL) The optimal working dilution should be determined by the end user.
Storage Buffer	In PBS, pH 7.2 (40% glycerol, 0.02% sodium azide)
Storage Instruction	Store at 4°C. For long term storage store at -20°C. Aliquot to avoid repeated freezing and thawing.
Note	This product contains sodium azide: a POISONOUS AND HAZARDOUS SUBSTANCE which should be handled by trained staff only.

## Applications

- Immunohistochemistry (Formalin/PFA-fixed paraffin-embedded sections)

Immunohistochemical staining of human thyroid with WDR46 polyclonal antibody (Cat # PAB28194) shows strong cytoplasmic positivity in glandular cells.

- Immunofluorescence

Immunofluorescent staining of human cell line A-431 with WDR46 polyclonal antibody (Cat # PAB28194) at 1-4 ug/mL dilution shows positivity in vesicles.

## Gene Info — WDR46

Entrez GeneID	<a href="#">9277</a>
Gene Name	WDR46
Gene Alias	BING4, C6orf11, FP221
Gene Description	WD repeat domain 46
Gene Ontology	<a href="#">Hyperlink</a>
Other Designations	OTTHUMP00000029279

## Disease

- [Genetic Predisposition to Disease](#)

- [Lupus Erythematosus](#)