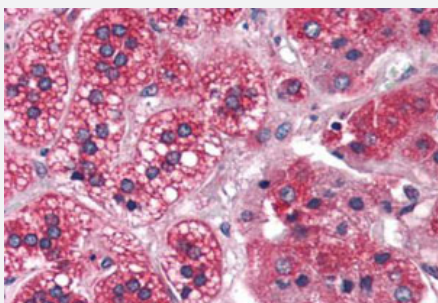


REEP5 polyclonal antibody

Catalog # PAB28177

Size 50 ug

Applications



Immunohistochemistry (Formalin/PFA-fixed paraffin-embedded sections)

Immunohistochemistry (Formalin/PFA-fixed paraffin-embedded sections) of human adrenal gland with REEP5 polyclonal antibody (Cat # PAB28177). Immunohistochemistry of formalin-fixed, paraffin-embedded tissue after heat-induced antigen retrieval.

Specification

Product Description	Rabbit polyclonal antibody raised against synthetic peptide of REEP5.
Immunogen	A synthetic peptide corresponding to 14 amino acids at N-terminus region of human REEP5.
Host	Rabbit
Reactivity	Human, Monkey, Mouse, Rat
Specificity	BLAST analysis of the peptide immunogen showed no homology with other human proteins.
Form	Liquid
Purification	Immunoaffinity chromatography
Recommend Usage	Immunohistochemistry (Formalin/PFA-fixed paraffin-embedded sections) (2.5 ug/ml)
Storage Buffer	In PBS (0.09% sodium azide)
Storage Instruction	Store at 4°C. For long term storage store at -80°C. Aliquot to avoid repeated freezing and thawing.
Note	This product contains sodium azide: a POISONOUS AND HAZARDOUS SUBSTANCE which should be handled by trained staff only.

Applications

- Immunohistochemistry (Formalin/PFA-fixed paraffin-embedded sections)

Immunohistochemistry (Formalin/PFA-fixed paraffin-embedded sections) of human adrenal gland with REEP5 polyclonal antibody (Cat # PAB28177). Immunohistochemistry of formalin-fixed, paraffin-embedded tissue after heat-induced antigen retrieval.

Gene Info — REEP5

Entrez GeneID	7905
Protein Accession#	Q00765
Gene Name	REEP5
Gene Alias	C5orf18, D5S346, DP1, MGC70440, TB2
Gene Description	receptor accessory protein 5
Omim ID	125265
Gene Ontology	Hyperlink
Other Designations	deleted in polyposis 1 polyposis coli region hypothetical protein DP1 polyposis locus protein 1 receptor expression enhancing protein 5

Disease

- [Cardiovascular Diseases](#)
- [Diabetes Mellitus](#)
- [Edema](#)