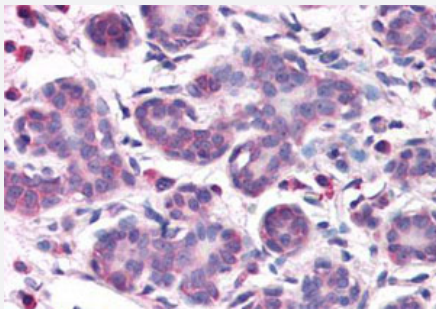


OSTC polyclonal antibody

Catalog # PAB28171

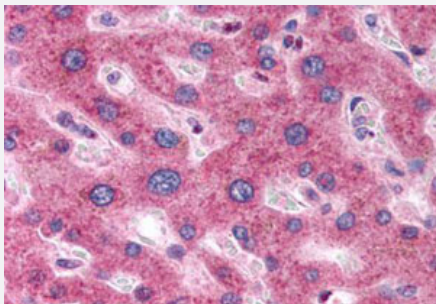
Size 50 ug

Applications



Immunohistochemistry (Formalin/PFA-fixed paraffin-embedded sections)

Immunohistochemistry (Formalin/PFA-fixed paraffin-embedded sections) of human breast with OSTC polyclonal antibody (Cat # PAB28171).
Immunohistochemistry of formalin-fixed, paraffin-embedded tissue after heat-induced antigen retrieval.



Immunohistochemistry (Formalin/PFA-fixed paraffin-embedded sections)

Immunohistochemistry (Formalin/PFA-fixed paraffin-embedded sections) of human liver with OSTC polyclonal antibody (Cat # PAB28171).
Immunohistochemistry of formalin-fixed, paraffin-embedded tissue after heat-induced antigen retrieval.

Specification

Product Description	Rabbit polyclonal antibody raised against synthetic peptide of OSTC.
Immunogen	A synthetic peptide corresponding to 17 amino acids at N-terminus region of human OSTC.
Host	Rabbit
Reactivity	Human, Monkey
Specificity	BLAST analysis of the peptide immunogen showed no homology with other human proteins.
Form	Liquid
Purification	Immunoaffinity chromatography

Recommend Usage	Immunohistochemistry (Formalin/PFA-fixed paraffin-embedded sections) (10 ug/ml)
Storage Buffer	In PBS (0.09% sodium azide)
Storage Instruction	Store at 4°C. For long term storage store at -80°C. Aliquot to avoid repeated freezing and thawing.
Note	This product contains sodium azide: a POISONOUS AND HAZARDOUS SUBSTANCE which should be handled by trained staff only.

Applications

- Immunohistochemistry (Formalin/PFA-fixed paraffin-embedded sections)

Immunohistochemistry (Formalin/PFA-fixed paraffin-embedded sections) of human breast with OSTC polyclonal antibody (Cat # PAB28171). Immunohistochemistry of formalin-fixed, paraffin-embedded tissue after heat-induced antigen retrieval.

- Immunohistochemistry (Formalin/PFA-fixed paraffin-embedded sections)

Immunohistochemistry (Formalin/PFA-fixed paraffin-embedded sections) of human liver with OSTC polyclonal antibody (Cat # PAB28171). Immunohistochemistry of formalin-fixed, paraffin-embedded tissue after heat-induced antigen retrieval.

Gene Info — OSTC

Entrez GeneID	58505
Protein Accession#	Q9NRP0
Gene Name	OSTC
Gene Alias	DC2
Gene Description	oligosaccharyltransferase complex subunit
Gene Ontology	Hyperlink
Other Designations	DC2 protein

Disease

- [Alcoholism](#)
- [Genetic Predisposition to Disease](#)