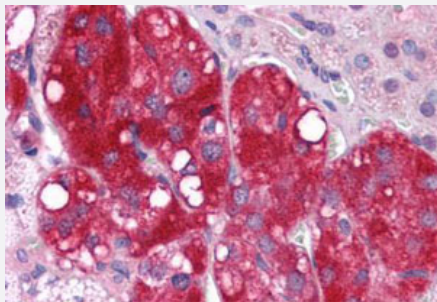


# LYPD3 polyclonal antibody

Catalog # PAB28165

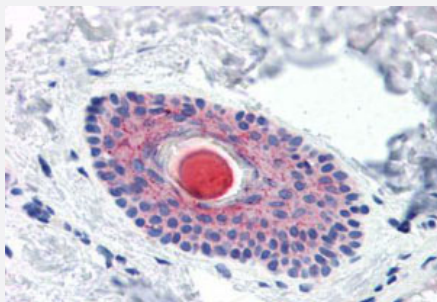
Size 50 ug

## Applications



### Immunohistochemistry (Formalin/PFA-fixed paraffin-embedded sections)

Immunohistochemistry (Formalin/PFA-fixed paraffin-embedded sections) of human adrenal gland with LYPD3 polyclonal antibody (Cat # PAB28165). Immunohistochemistry of formalin-fixed, paraffin-embedded tissue after heat-induced antigen retrieval.



### Immunohistochemistry (Formalin/PFA-fixed paraffin-embedded sections)

Immunohistochemistry (Formalin/PFA-fixed paraffin-embedded sections) of human hair follicle with LYPD3 polyclonal antibody (Cat # PAB28165). Immunohistochemistry of formalin-fixed, paraffin-embedded tissue after heat-induced antigen retrieval.

## Specification

<b>Product Description</b>	Rabbit polyclonal antibody raised against synthetic peptide of LYPD3.
<b>Immunogen</b>	A synthetic peptide corresponding to 16 amino acids at C-terminus region of human LYPD3.
<b>Host</b>	Rabbit
<b>Reactivity</b>	Human
<b>Specificity</b>	BLAST analysis of the peptide immunogen showed no homology with other human proteins, except ALAS2 (47%).
<b>Form</b>	Liquid

<b>Purification</b>	Immunoaffinity chromatography
<b>Recommend Usage</b>	Immunohistochemistry (Formalin/PFA-fixed paraffin-embedded sections) (10 ug/ml)
<b>Storage Buffer</b>	In PBS (0.09% sodium azide)
<b>Storage Instruction</b>	Store at 4°C. For long term storage store at -80°C. Aliquot to avoid repeated freezing and thawing.
<b>Note</b>	This product contains sodium azide: a POISONOUS AND HAZARDOUS SUBSTANCE which should be handled by trained staff only.

## Applications

- Immunohistochemistry (Formalin/PFA-fixed paraffin-embedded sections)

Immunohistochemistry (Formalin/PFA-fixed paraffin-embedded sections) of human adrenal gland with LYPD3 polyclonal antibody (Cat # PAB28165). Immunohistochemistry of formalin-fixed, paraffin-embedded tissue after heat-induced antigen retrieval.

- Immunohistochemistry (Formalin/PFA-fixed paraffin-embedded sections)

Immunohistochemistry (Formalin/PFA-fixed paraffin-embedded sections) of human hair follicle with LYPD3 polyclonal antibody (Cat # PAB28165). Immunohistochemistry of formalin-fixed, paraffin-embedded tissue after heat-induced antigen retrieval.

## Gene Info — LYPD3

<b>Entrez GeneID</b>	<a href="#">27076</a>
<b>Protein Accession#</b>	<a href="#">O95274</a>
<b>Gene Name</b>	LYPD3
<b>Gene Alias</b>	C4.4A
<b>Gene Description</b>	LY6/PLAUR domain containing 3
<b>Omim ID</b>	<a href="#">609484</a>
<b>Gene Ontology</b>	<a href="#">Hyperlink</a>
<b>Other Designations</b>	2310061G07Rik GPI-anchored metastasis-associated protein homolog