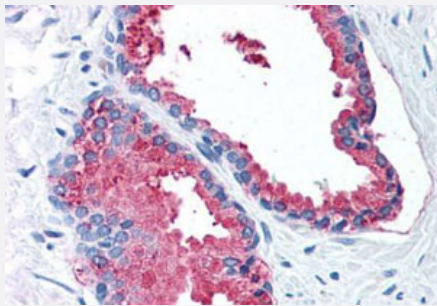


# LOXL2 polyclonal antibody

Catalog # PAB28164

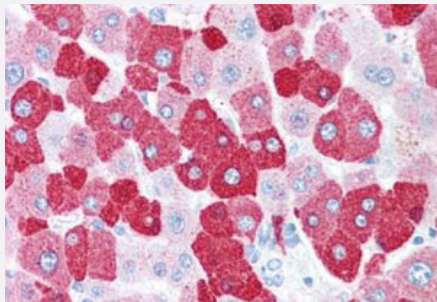
Size 50 ug

## Applications



### Immunohistochemistry (Formalin/PFA-fixed paraffin-embedded sections)

Immunohistochemistry (Formalin/PFA-fixed paraffin-embedded sections) of human prostate with LOXL2 polyclonal antibody (Cat # PAB28164).  
Immunohistochemistry of formalin-fixed, paraffin-embedded tissue after heat-induced antigen retrieval.



### Immunohistochemistry (Formalin/PFA-fixed paraffin-embedded sections)

Immunohistochemistry (Formalin/PFA-fixed paraffin-embedded sections) of human liver with LOXL2 polyclonal antibody (Cat # PAB28164).  
Immunohistochemistry of formalin-fixed, paraffin-embedded tissue after heat-induced antigen retrieval.

## Specification

<b>Product Description</b>	Rabbit polyclonal antibody raised against synthetic peptide of LOXL2.
<b>Immunogen</b>	A synthetic peptide corresponding to 20 amino acids at internal region of human LOXL2.
<b>Host</b>	Rabbit
<b>Reactivity</b>	Bovine, Dog, Guinea pig, Horse, Human, Monkey, Mouse, Rabbit, Rat
<b>Specificity</b>	BLAST analysis of the peptide immunogen showed no homology with other human proteins.
<b>Form</b>	Liquid
<b>Purification</b>	Immunoaffinity chromatography

Recommend Usage	Immunohistochemistry (Formalin/PFA-fixed paraffin-embedded sections) (15 ug/ml)
Storage Buffer	In PBS (0.09% sodium azide)
Storage Instruction	Store at 4°C. For long term storage store at -80°C. Aliquot to avoid repeated freezing and thawing.
Note	This product contains sodium azide: a POISONOUS AND HAZARDOUS SUBSTANCE which should be handled by trained staff only.

## Applications

- Immunohistochemistry (Formalin/PFA-fixed paraffin-embedded sections)

Immunohistochemistry (Formalin/PFA-fixed paraffin-embedded sections) of human prostate with LOXL2 polyclonal antibody (Cat # PAB28164). Immunohistochemistry of formalin-fixed, paraffin-embedded tissue after heat-induced antigen retrieval.

- Immunohistochemistry (Formalin/PFA-fixed paraffin-embedded sections)

Immunohistochemistry (Formalin/PFA-fixed paraffin-embedded sections) of human liver with LOXL2 polyclonal antibody (Cat # PAB28164). Immunohistochemistry of formalin-fixed, paraffin-embedded tissue after heat-induced antigen retrieval.

## Gene Info — LOXL2

Entrez GeneID	<a href="#">4017</a>
Protein Accession#	<a href="#">Q9Y4K0</a>
Gene Name	LOXL2
Gene Alias	LOR2, WS9-14
Gene Description	lysyl oxidase-like 2
Omim ID	<a href="#">606663</a>
Gene Ontology	<a href="#">Hyperlink</a>
Gene Summary	<p>This gene encodes a member of the lysyl oxidase gene family. The prototypic member of the family is essential to the biogenesis of connective tissue, encoding an extracellular copper-dependent amine oxidase that catalyses the first step in the formation of crosslinks in collagens and elastin. A highly conserved amino acid sequence at the C-terminus end appears to be sufficient for amine oxidase activity, suggesting that each family member may retain this function. The N-terminus is poorly conserved and may impart additional roles in developmental regulation, senescence, tumor suppression, cell growth control, and chemotaxis to each member of the family. [provided by RefSeq]</p>

**Other Designations**

lysyl oxidase homolog 2|lysyl oxidase related 2

**Disease**

- [Genetic Predisposition to Disease](#)
- [Intracranial Aneurysm](#)
- [Long QT syndrome](#)
- [Torsades de Pointes](#)