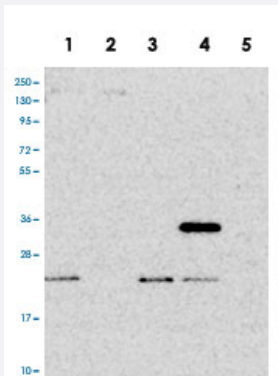


PTCD2 polyclonal antibody

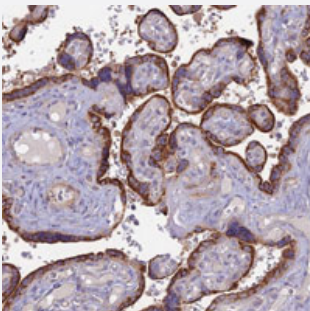
Catalog # PAB28151 Size 100 uL

Applications



Western Blot

Western blot analysis of Lane 1: RT-4, Lane 2: U-251 MG, Lane 3: Human Plasma, Lane 4: Liver, Lane 5: Tonsil with PTCD2 polyclonal antibody (Cat # PAB28151).



Immunohistochemistry (Formalin/PFA-fixed paraffin-embedded sections)

Immunohistochemical staining of human placenta with PTCD2 polyclonal antibody (Cat # PAB28151) shows strong cytoplasmic positivity in trophoblastic cells.

Specification

Product Description	Rabbit polyclonal antibody raised against recombinant PTCD2.
Immunogen	Recombinant protein corresponding to amino acids of recombinant PTCD2.
Sequence	KLNSPESFKICTTLREEALLKGEILSRRASCFAVALALNQNEMAKAVSIFSQIMNPESACINLNIIHIQ SNMLENLIKTLK
Host	Rabbit
Reactivity	Human
Form	Liquid

Purification	Antigen affinity purification
Isotype	IgG
Recommend Usage	Immunohistochemistry (1:50-1:200) Western Blot (1:100-1:250) The optimal working dilution should be determined by the end user.
Storage Buffer	In PBS, pH 7.2 (40% glycerol, 0.02% sodium azide)
Storage Instruction	Store at 4°C. For long term storage store at -20°C. Aliquot to avoid repeated freezing and thawing.
Note	This product contains sodium azide: a POISONOUS AND HAZARDOUS SUBSTANCE which should be handled by trained staff only.

Applications

- Western Blot

Western blot analysis of Lane 1: RT-4, Lane 2: U-251 MG, Lane 3: Human Plasma, Lane 4: Liver, Lane 5: Tonsil with PTCD2 polyclonal antibody (Cat # PAB28151).

- Immunohistochemistry (Formalin/PFA-fixed paraffin-embedded sections)

Immunohistochemical staining of human placenta with PTCD2 polyclonal antibody (Cat # PAB28151) shows strong cytoplasmic positivity in trophoblastic cells.

Gene Info — PTCD2

Entrez GeneID	79810
Protein Accession#	Q8WV60
Gene Name	PTCD2
Gene Alias	FLJ12598
Gene Description	pentatricopeptide repeat domain 2
Gene Ontology	Hyperlink
Other Designations	OTTHUMP00000126945