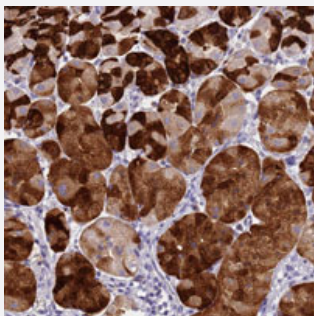


DPRX polyclonal antibody

Catalog # PAB28150 Size 100 uL

Applications



Immunohistochemistry (Formalin/PFA-fixed paraffin-embedded sections)

Immunohistochemical staining of human stomach with DPRX polyclonal antibody (Cat # PAB28150), upper shows strong cytoplasmic positivity in glandular cells at 1:200-1:500 dilution.

Specification

| | |
|----------------------------|--|
| Product Description | Rabbit polyclonal antibody raised against recombinant DPRX. |
| Immunogen | Recombinant protein corresponding to amino acids of recombinant DPRX. |
| Sequence | GVSTSVGLRNADTLPRLPNAAHPIGLVYTGHRVPSFQLILYPNLKVPANDFIGHRVHFGCCRDPNY CLYPILESQVCAPSFHSGSPACSSNQSR |
| Host | Rabbit |
| Reactivity | Human |
| Form | Liquid |
| Purification | Antigen affinity purification |
| Isotype | IgG |
| Recommend Usage | Immunohistochemistry (1:200-1:500) The optimal working dilution should be determined by the end user. |
| Storage Buffer | In PBS, pH 7.2 (40% glycerol, 0.02% sodium azide) |

Storage Instruction

Store at 4°C. For long term storage store at -20°C.
Aliquot to avoid repeated freezing and thawing.

Note

This product contains sodium azide: a POISONOUS AND HAZARDOUS SUBSTANCE which should be handled by trained staff only.

Applications

- Immunohistochemistry (Formalin/PFA-fixed paraffin-embedded sections)

Immunohistochemical staining of human stomach with DPRX polyclonal antibody (Cat # PAB28150), upper shows strong cytoplasmic positivity in glandular cells at 1:200-1:500 dilution.

Gene Info — DPRX

Entrez GeneID[503834](#)**Protein Accession#**[A6NFAQ7](#)**Gene Name**

DPRX

Gene Alias

-

Gene Description

divergent-paired related homeobox

Omim ID[611165](#)**Gene Ontology**[Hyperlink](#)**Gene Summary**

Homeobox genes encode DNA-binding proteins, many of which are thought to be involved in early embryonic development. Homeobox genes encode a DNA-binding domain of 60 to 63 amino acids referred to as the homeodomain. This gene is a member of the DPRX homeobox gene family. Evidence of mRNA expression has not yet been found for this gene. Multiple, related processed pseudogenes have been found which are thought to reflect expression of this gene in the germ line or embryonic cells. [provided by RefSeq]

Other Designations

divergent paired-related homeobox